



**WEB DICOM Viewer MedDream**  
**Users Manual**

Version 2.01

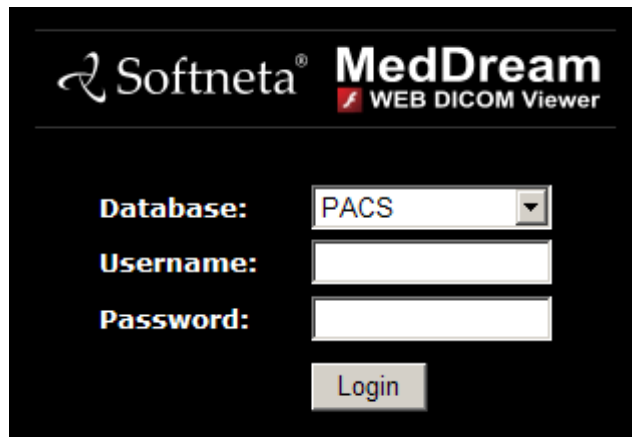
2009-10-08

## Content

<a href="#">1.0 HOW TO LOG ON TO THE SYSTEM MEDDREAM.....</a>	<a href="#">3</a>
<a href="#">2.0 HOW TO SEARCH FOR THE STUDIES.....</a>	<a href="#">3</a>
<a href="#">3.0 HOW TO VIEW AND ANALYSE THE IMAGES.....</a>	<a href="#">8</a>
<a href="#">4.0 ADDITIONAL MENU.....</a>	<a href="#">11</a>

## 1.0 HOW TO LOG ON TO THE SYSTEM MEDDREAM

To log on to the system MedDream, please enter the address given by your administrator in your Internet Browser. You should see the following screen.



The screenshot shows the MedDream login interface. At the top left is the Softneta logo, and at the top right is the text 'MedDream WEB DICOM Viewer'. Below this, there are three input fields: 'Database:' with a dropdown menu showing 'PACS', 'Username:' with a text input field, and 'Password:' with a text input field. A 'Login' button is located below the password field.

Please enter your user name in the field „**Username**“. Now, please enter the password in the field „**Password**“.

## 2.0 HOW TO SEARCH FOR THE STUDIES

The work with the system MedDream starts from the search of studies.



There is a special menu Search that is used to search for the studies. To benefit from this menu you should understand all of the options that this menu can offer. You can save much time if you use these functions. To find a study please press the button “Search” in the left top corner of the window. The following search screen appears:





studies in the alphabetic order of the patients names, please press the column Name. If you press the column Name one time, the patients names shall be displayed from A-Z; if you press the button twice, the names shall be displayed from Z-A. The other columns work in the same way.

Please select the patient and press the mouse button twice on the patient's name to display the window with the study of the patient. You can also open this window by pressing the mouse button on the patient's name once and pushing the button OK. If you like to add another study (compare with opened studies), please select "Add" check box and pushing the button OK. If you do not find the necessary study or if you do not want to modify the patient's details in the patient window, press „Cancel“.

The buttons "Send" and "Export" are used to send the chosen test to the remote device or to save the test on CD disc.



To send the test, please choose the test that you want to send and press the button „Forward“.

After pressing the button the menu for sending appears.

Please choose the receiving device from the list, for example device "sFilm1". To start sending press the button „Forward“.

A screenshot of a dialog box titled "Forward". The dialog box has a light gray background and a white content area. The content area contains a table with patient information. Below the table is a row with a "Forward" button and a dropdown menu showing "eFilm1". At the bottom right of the dialog box is a "Close" button.

<b>Paciento ID</b>	<b>241</b>
<b>Paciento Vardas</b>	<b>.NAME</b>
<b>Tyrimo Data</b>	<b>2009-01-21</b>
<b>Tyrimo Laikas</b>	<b>09:52:46</b>
<b>Tyrimo Aprašymas</b>	<b>KELIS K.</b>

Forward eFilm1 ▼

Close

To export a test, please choose the test that you want to export and press the button "Export". Export Menu appears.

**Export**

---

Patient ID            241  
Patient Name            NAME  
Study Date            2009-01-21  
Study Time            09:52:46

---

**Export**

Volumes	ISO Image	Burn

**Close**

When you press the button “Export” in Export Menu, the following window appears.

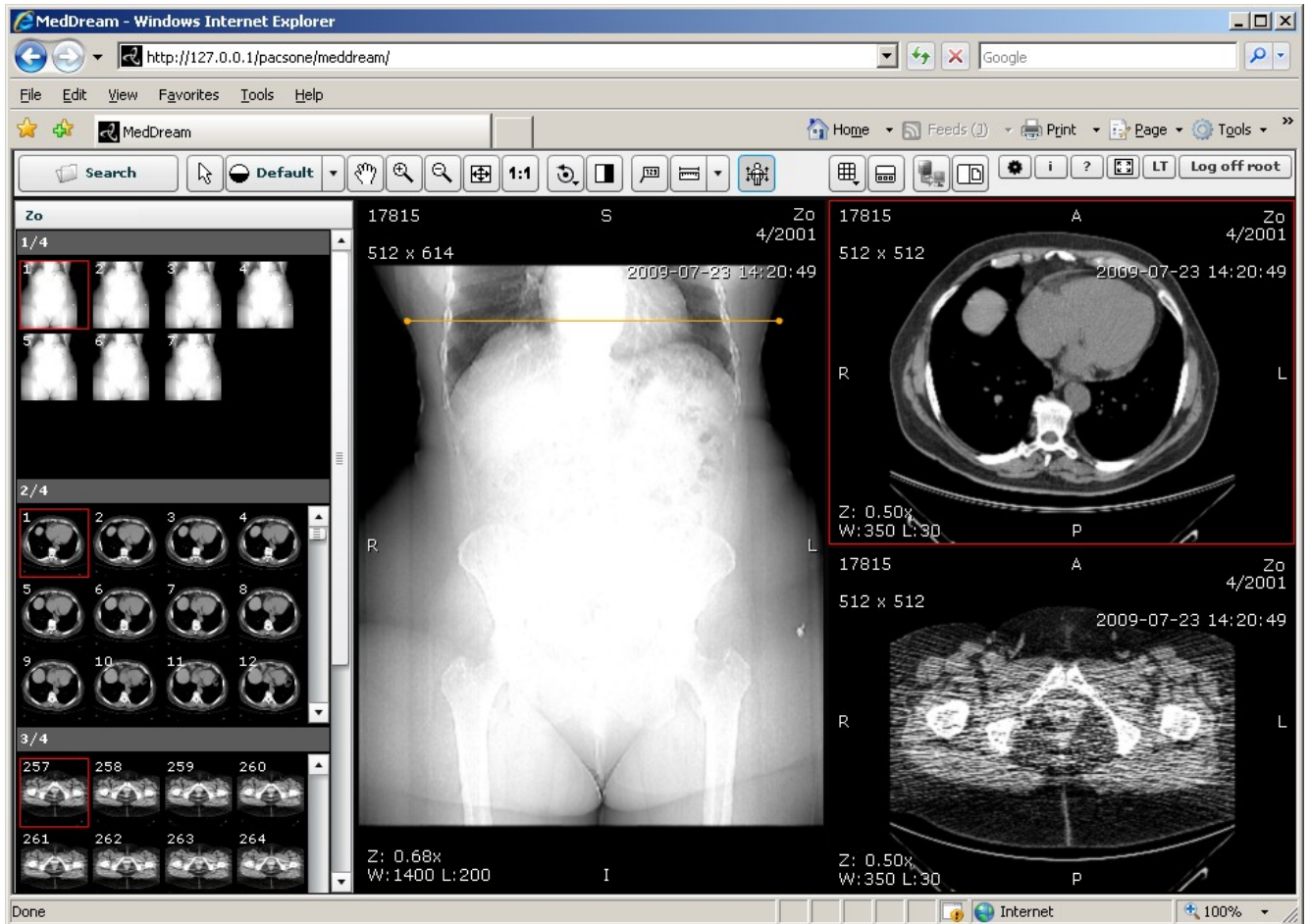
**Export**

Volumes	ISO Image	Burn
VOL1	<b>Download ISO</b>	<b>Burn Now</b>

**Close**

You can choose two options in the window. The first option is „Downolad ISO“. This option is used to send the file and to save on CD . The second option is „Burn Now“. This option is used to write the file on CD automatically. The user can choose which one of these two options to use.

### 3.0 HOW TO VIEW AND ANALYSE THE IMAGES



#### IMAGE TOOLBAR



This button is used to adjust the Level\Window contrast of the image. You can adjust the contrast in two different ways:

1. You can select one of the standard contrast settings by pressing the button




; or

2. You can choose your own contrast setting by pressing the button



This button is used to move the image. If you want to move the image, please press the

button . Then place the mouse cursor on the object which you want to move and press the left mouse button. Keep the button pressed and move the object to the desired place.



This button is select to start measurement or to select measurement



This button is used to measure the distance between two points. To measure the distance, please place the mouse cursor on the starting point from which you want to measure the distance. Then press and hold the left mouse button. Move the cursor to the end point and release the button. The distance (in millimetres) is shown on the screen.



This button is used to measure an angle. To measure an angle, please place the mouse cursor on the point from which you want to measure the angle. Then press the left mouse button. Move the cursor to the second point (the intersection point) and press the left mouse button again. Then move the cursor to the end point and press the left mouse button once more. The value of the angle formed by the two lines appears on the screen.



The button is used to delete all the annotations and measurements shown on the screen.



This button is used to measure the density of a diagnostic image. To measure the density, please press this button once. Move the mouse cursor on the point you want. The density of the point and its coordinates should be visible next to the cursor (expressed in HU units). Please note that this button is active only for the images obtained by using computer tomography.



This button is used to invert the image. To invert the image, please press the button once. If you press the button second time, the image shall return to its previous state.

## ZOOM TOOLBAR



Zoom In button. Use this button to increase the size of the image.



Zoom Out button. Use this button to decrease the size of the image.



Full Screen button. If you press this button, the size of the image shall be adjusted automatically so that the image would fill the entire screen. For example, if only part of the image is visible on the screen, press the button to see the whole image displayed in the entire screen.



This button is used to restore the original size of the image.

## ROTATE MENU

If you press this button, the following buttons appear . Use them to rotate the image.



The button is used to determine the image localisation. Normally it is used in CT or MR tests which consist of several images in different planes.



The icon indicates that the test has a report. To read the report, please press the button.



This button is used to select how many Rows and Columns will be in Screen Layout.



This button is used to select Thumbnails Position BOTTOM or LEFT

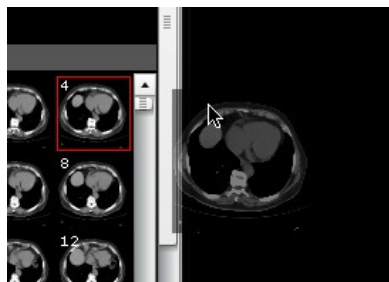


This button is used to Forward study




To open image please select view window and double click left mouse button on image you like to view. Also you can drag and drop the image to any view window.

Navigation between one series images us made by wheeling mouse wheel.



## 4.0 ADDITIONAL MENU


The button **Log off root** is used to disconnect the user from the system. It is very important to Log off after you work is finished. After you log off from the system – meddream connection is released (available connections depends on our license).

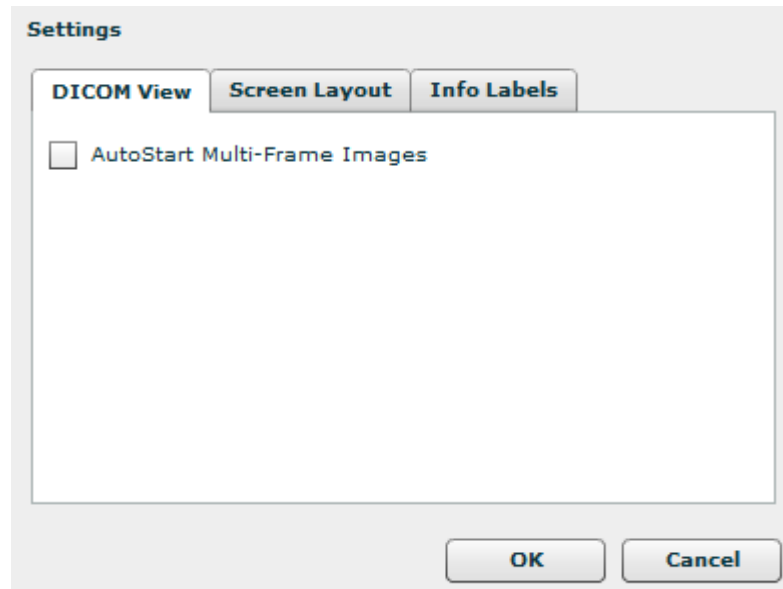
The button  is used to turn on the Full Screen mode. In Full Screen mode you can use mouse only (can't use keyboard keys) because of Flash Full Screen imitation. To exit Full Screen mode press ESC or Full Screen button.



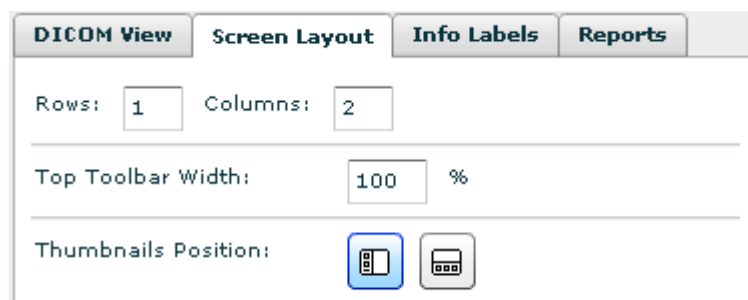
The option  “Info” can be used to see information about License and Software version.

The option  “Help” can be used to open PDF user manual in external window.

The option  “Settings” can be used by administrator only. By using the option “Settings” the administrator can access the Administration Menu.



Option “AutoStart Multi-frame Images” is used to start the Multi-Frame images automatically when the test window is opened.



The option “Screen Layout” is used to set the number of windows. You can select number of Rows and Columns in Screen Layout. Option “Top Toolbar Width” is used to set vertical position of “Additional menu”. Option “Thumbnails position” is used to select LEFT of BOTTOM position of Thumbnails.

Left Side Information	Right Side Information
(0020,0010)	(0010,0010)
	(0010,0020)
(0028,0011) x (0028,0010)	(0008,103E)
	(0008,0020) (0008,0030)

Option “Info Labels” is used to configure the information to be displayed on the screen. The data of the information fields are taken from the table in the DICOM file. To display the information one should know the coordinates of the information field.