



**MedDream PACS Premium
Install Manual
Version 6.8.3**

© 2020, Softneta UAB, Kaunas

All rights reserved in the event of granting of patents or registration as a utility patent.

All names of companies and products mentioned in this user's manual may be trademarks or registered trademarks. References to products of other manufacturers are for information purposes only. Such references are intended neither as an approval nor a recommendation of these products. Softneta UAB accepts no liability for the performance or use of such products.

Other brand names, software and hardware names used in this user's manual are subject to trademark or patent protection. The quoting of products is for informational purposes only and does not represent a trademark misuse.

This user's manual is protected by copyright. Unless expressly authorized in writing, dissemination, duplication or other commercial exploitation of this documentation set or communication of its contents or parts of it is not permitted. In case of infringement, the violator may be liable to pay compensation for damages.

Specifications due to technical developments are subject to change. This user's manual is not subject to the revision service. Please contact the manufacturer or authorized dealer to request the latest edition of the manual.

Table of contents

Notes on the user`s manual.....	4
Explanation of symbols used	5
1. Installation.....	6
2. Services and processes	11
3. MedDream WEB interface.....	13
4. MedDream PACS administrating interface.....	13
5. MySQL database administrating using Adminer	14
6. Uninstall.....	14
Index	16

Notes on the user`s manual

Purpose and availability of documentation

This user`s manual describes the installation procedure of MedDream PACS Premium.

Correct installation of the system is imperative for its safe and successful functioning. You should therefore ensure that you are thoroughly familiar with the instructions before starting the installation procedure.

The installation instructions and other documentation enclosed with MedDream PACS Premium should be kept accessible to users at all times to ensure that the information required for the use of MedDream PACS Premium is readily available.

MedDream PACS Premium is not intended to replace skilled and qualified medical professional. The software should only be used by people who have been trained and is acquainted with its functions, capabilities and limitations.

Users must be aware that the quality, accuracy and correctness of the output data displayed on the screen, printed or sent from MedDream PACS Premium depends on the quality, accuracy and correctness of the input data, the user`s interface with the data, the quality, calibration and other parameters of printer or monitoring device.

MedDream PACS Premium has been tested extensively, however, it is possible that errors may remain/emerge in the software. Users must be aware of the potential for errors and in case of an error or for other assistance, please contact Softneta UAB Customer support:

Write an e-mail: support@softneta.com

Questions and comments

If you have any questions or comments regarding this user`s manual, please contact Softneta UAB Customer support.

Explanation of symbols used

During MedDream usage please pay attention to important information, related to patient safety, which is warning about software functions, whose implementation errors may pose a risk to patient health.

The symbols in this Manual are intended to alert user about possible errors in the software or its use. Please read the information carefully as you see the symbols described below.



WARNING! This indicates a hazardous situation which may cause patient death, potential injury or serious health impairment, requiring professional medical intervention.



CAUTION! This indicates a hazardous situation which may cause minor potential injury, not requiring professional medical intervention, or simply cause inconvenience to medical professionals using software without affecting patient health status or health changes.



NOTE! Information, hints and advice for a better understanding of the instructions to be observed in the operation of the instrument.

1. Installation

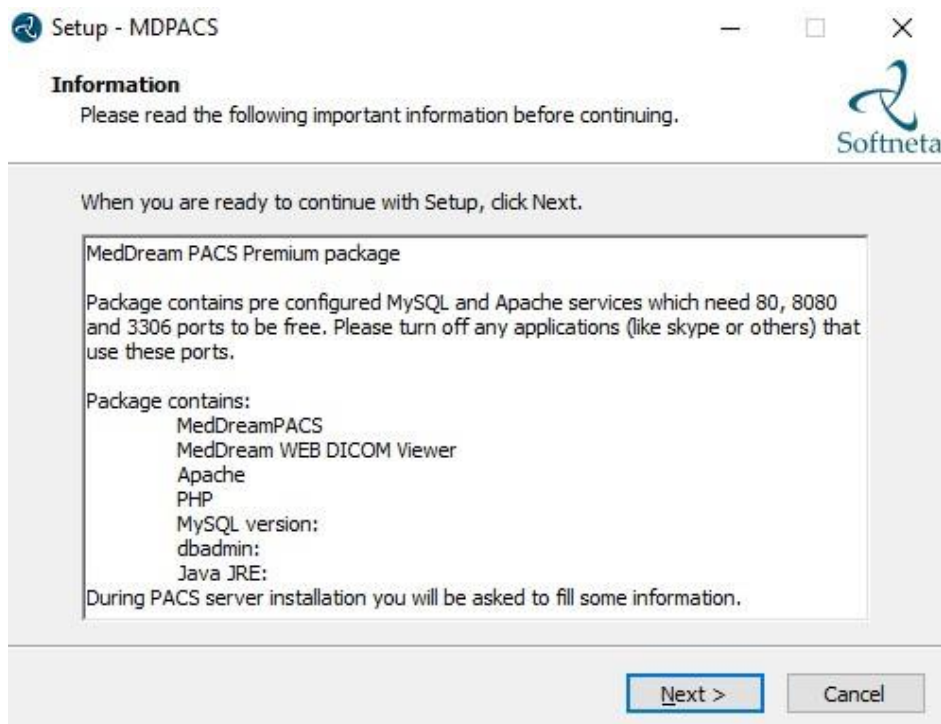


Figure 1 MedDream PACS Premium package information

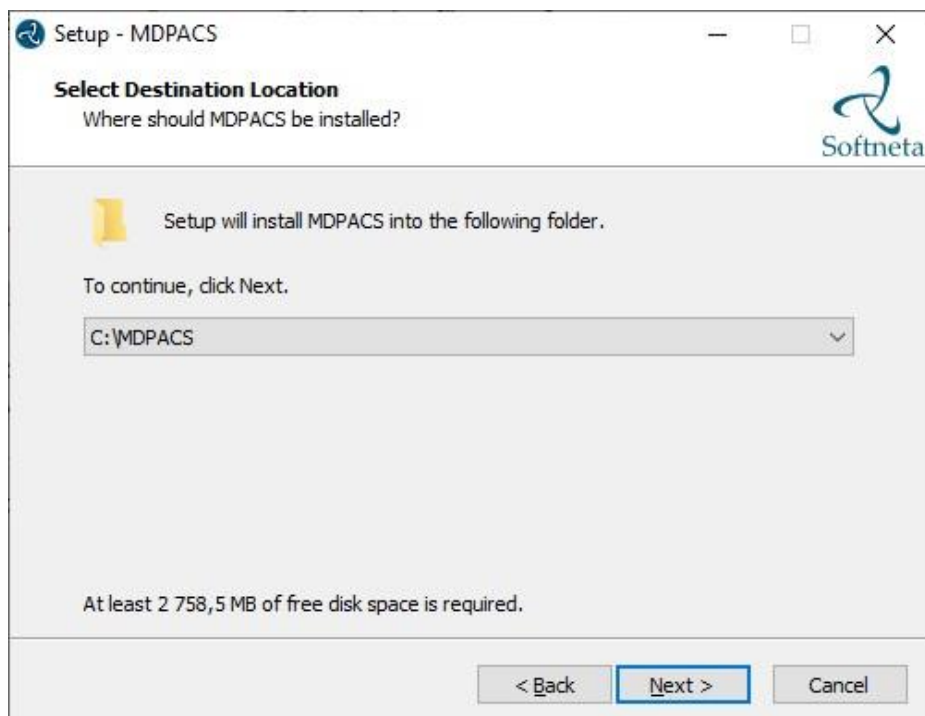
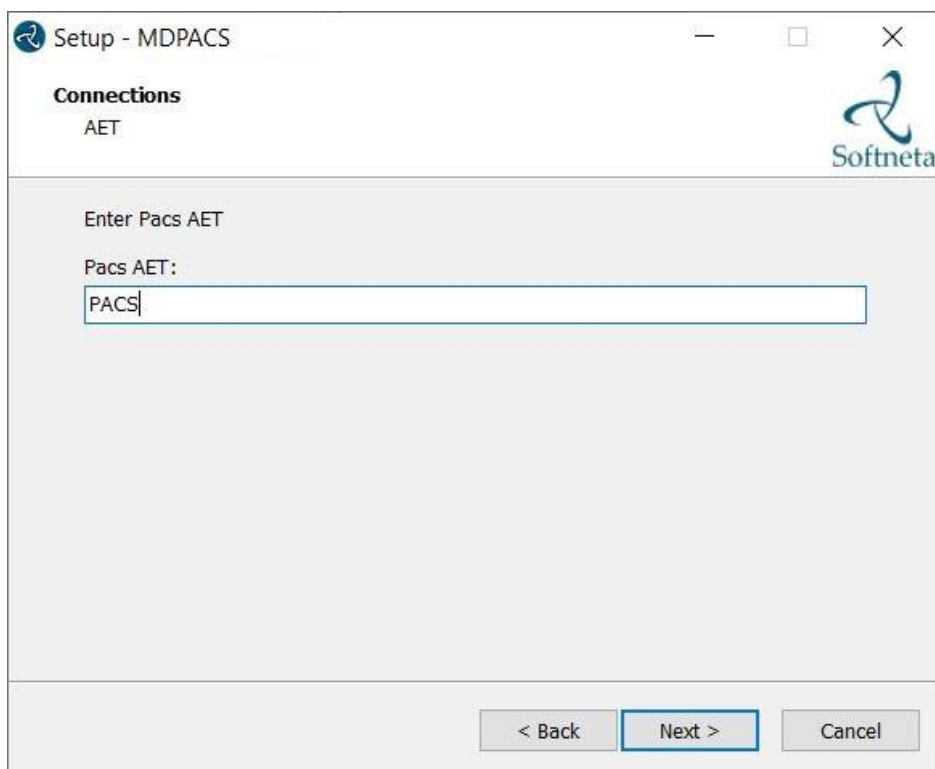


Figure 2 Select drive to install system



Setup - MDPACS

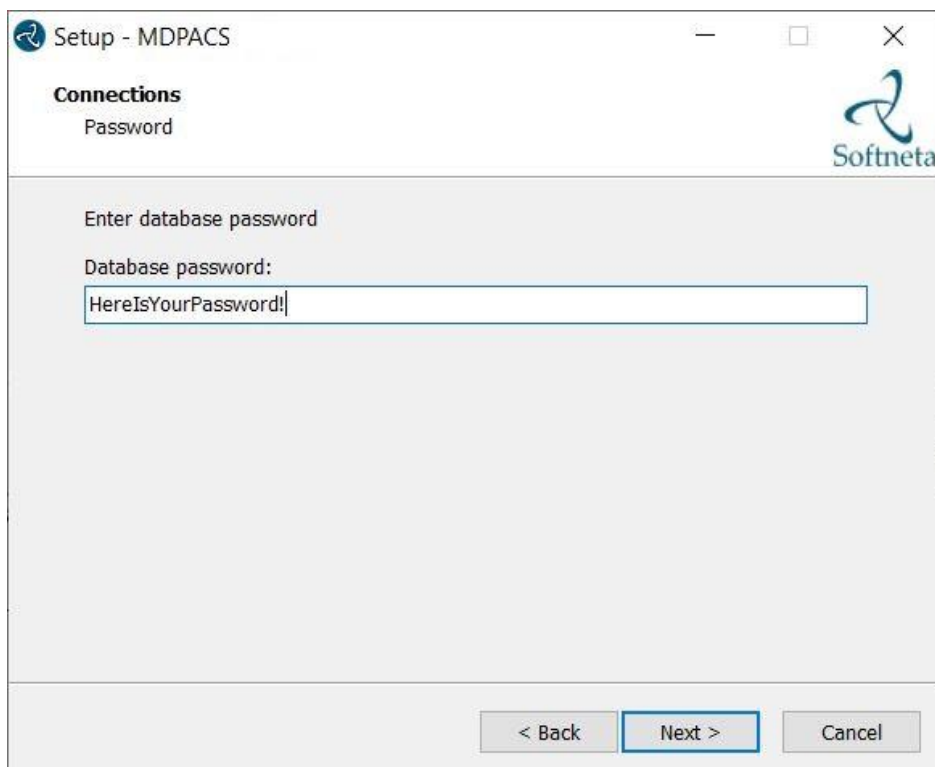
Connections
AET

Enter Pacs AET

Pacs AET:
PACS

< Back Next > Cancel

Figure 3 PACS AET information



Setup - MDPACS

Connections
Password

Enter database password

Database password:
HereIsYourPassword!

< Back Next > Cancel

Figure 4 Database password information

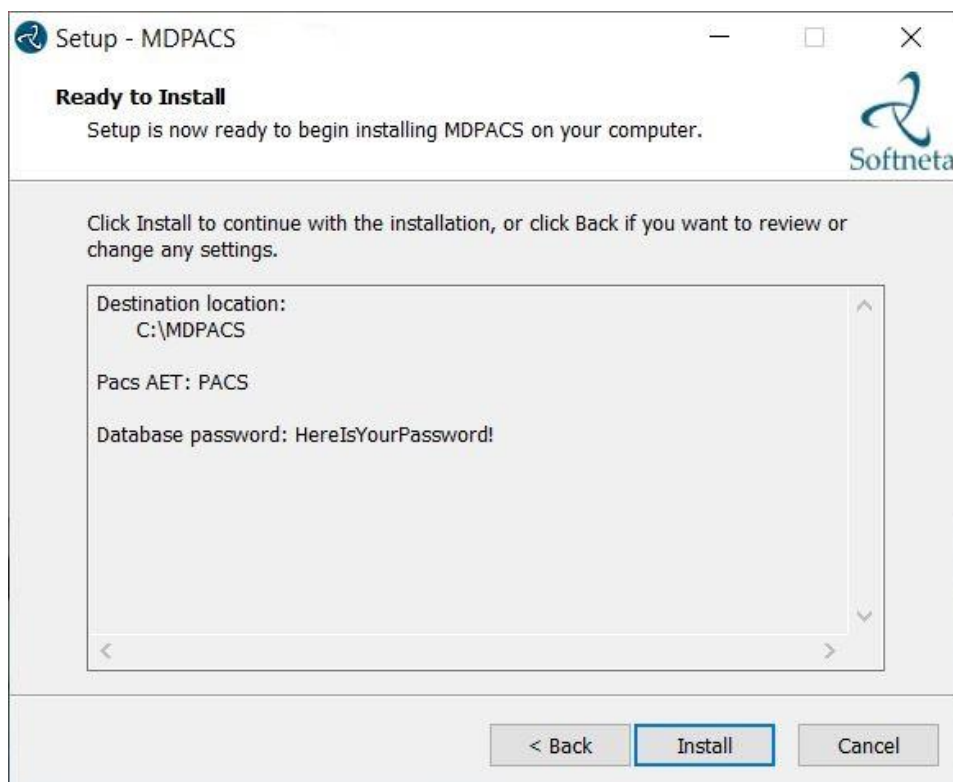


Figure 5 Information before install

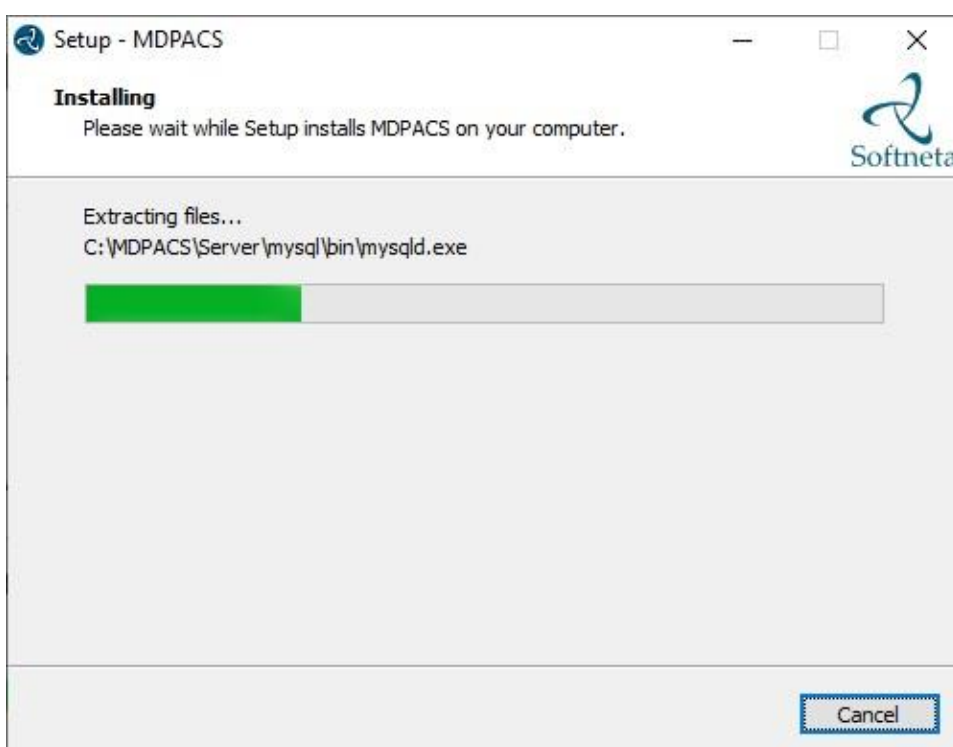


Figure 6 Installation process

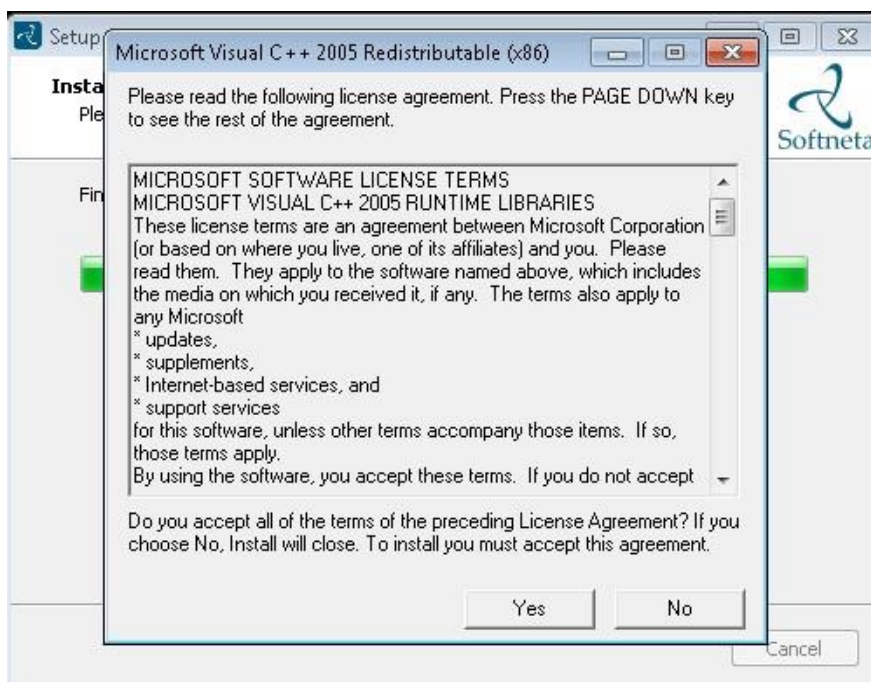


Figure 7 Microsoft Visual C++ 2005 installation

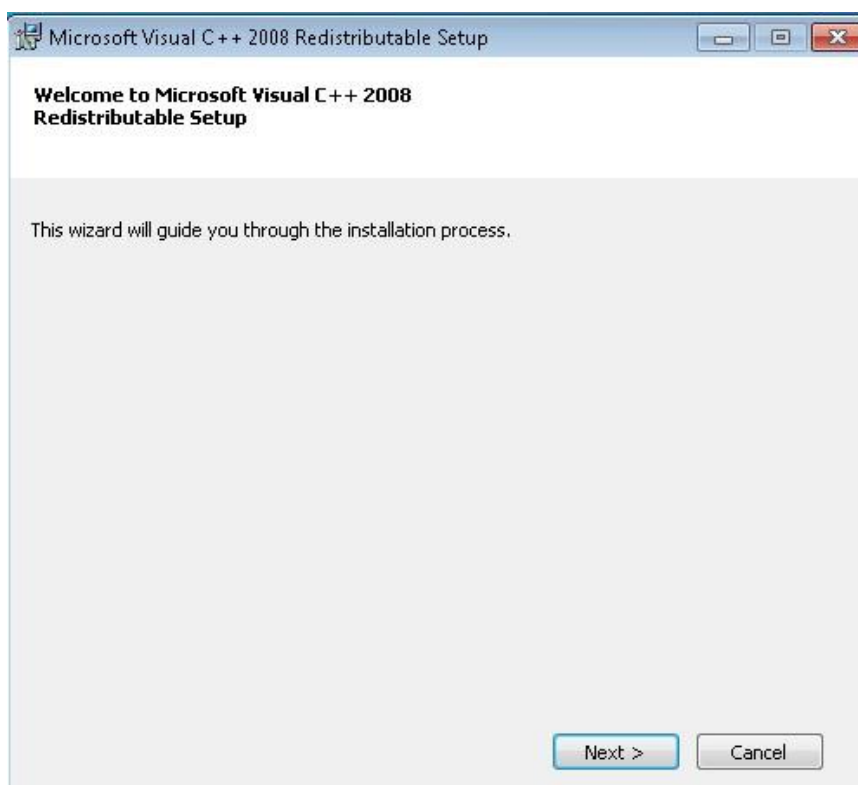


Figure 8 Microsoft Visual C++ Installation



NOTE! Microsoft Visual C++ 2008 must be installed when it will be asked by installer.

The screenshot shows the 'MedDreamPACS-Premium Installer' window with the following configuration fields:

- DICOM:**
 - Application Entity Title: PACS
 - Server Port: 104
 - Log File Directory: C:\MDPACS\PACS\log
- Database:**
 - Database Host: localhost
 - Database Name: PACS
 - Username: dicom
 - Password: [masked]
- Storage:**
 - Default Archive Directory: C:\MDPACS\DICOM
 - Archive Format: DicomPart10 (Default)
- HL-7 Message Listener Option:**
 - Enable HL-7 Message Listener Option
 - HL-7 Listener Port: 7777
 - HL-7 Message Persistence: 90 Days

Buttons at the bottom: Upgrade, Install, Uninstall, Cancel.

Figure 9 PACS Server Installation

Please fill right information:

- Application Entity Title - your AET which will be used for receiving studies
- Server port - usually it's 104 but can be other and make sure that this port are free and open in firewall
- Database Name - there write how your database will be called
- Username - can be different, default DICOM and response only from service to database connection
- Password - create password for user above
- Default Archive Directory is: C:\MDPACS\DICOM

Press install and you will be asked to insert MySQL user and password



NOTE! Also, all required or commended info will be shown during installation process.



Figure 10 Finishing installation

2. Services and processes



NOTE! Ensure that all 3 services (Apache, MySQL, PACS) are installed and running.

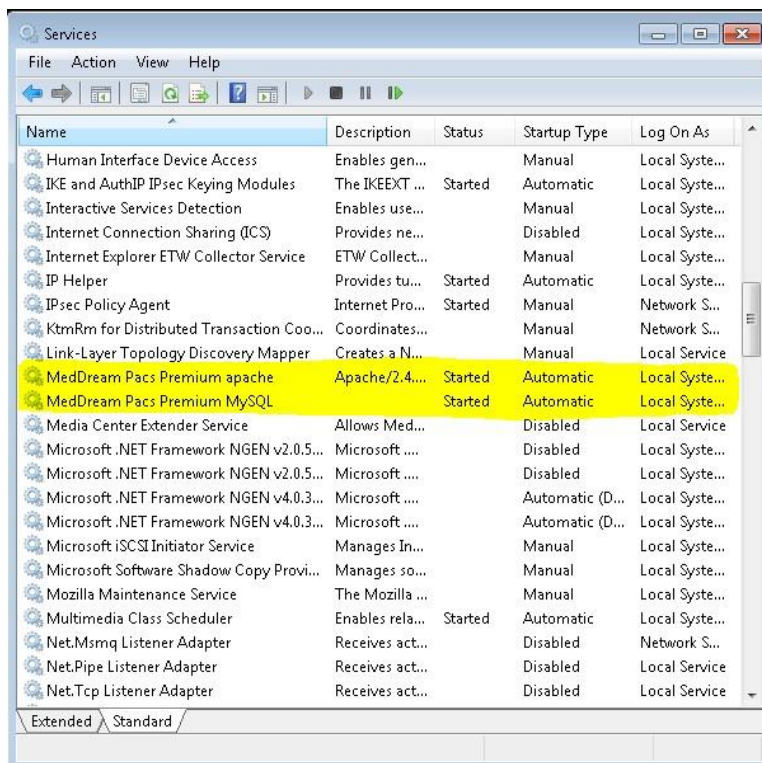


Figure 11 Services

If **MedDream Pacs Premium apache** service not running or can't start up please check is 80 free.

MedDream Pacs Premium MySQL Database server use 3306 port

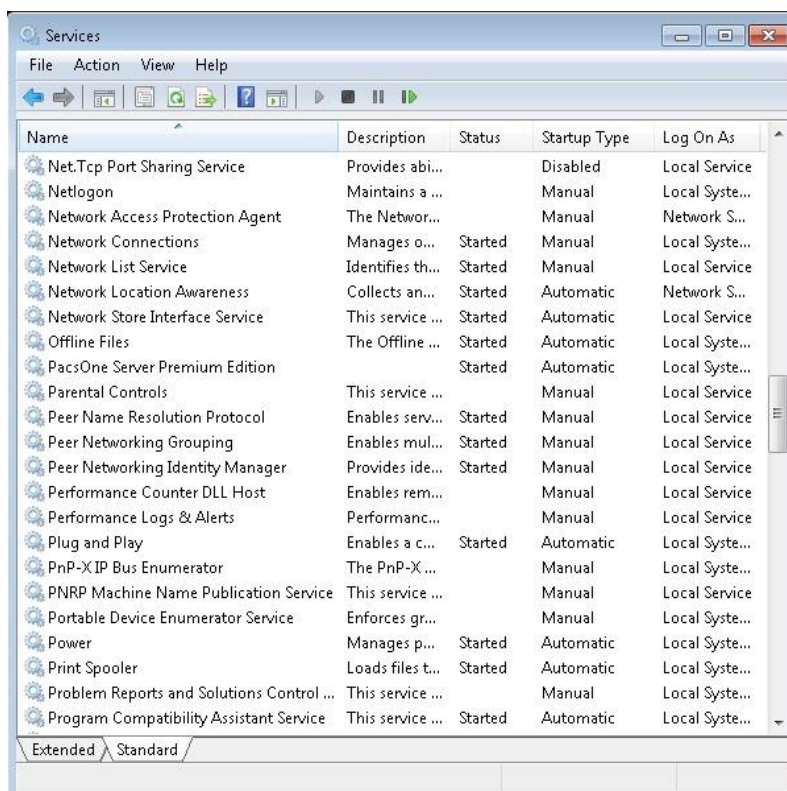


Figure 12 PACS Service

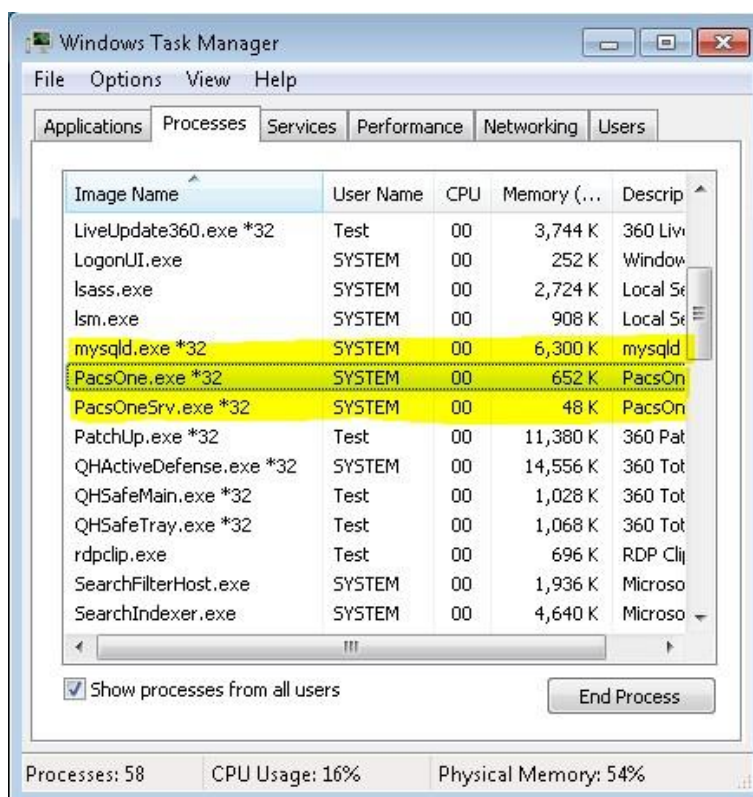


Figure 13 Processes



NOTE! Please make sure that both PACS processes are running on machine

3. MedDream WEB interface

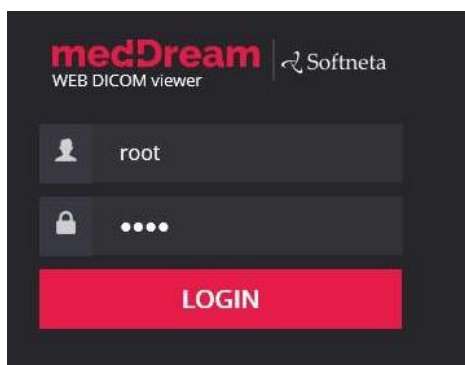


Figure 14 MedDream WEB interface

MedDream WEB DICOM viewer is set as root directory of web service and can be found <http://127.0.0.1>

Database: your chosen database name during installation step (Figure 9).

Username: root

Password: ***your password***

4. MedDream PACS administrating interface

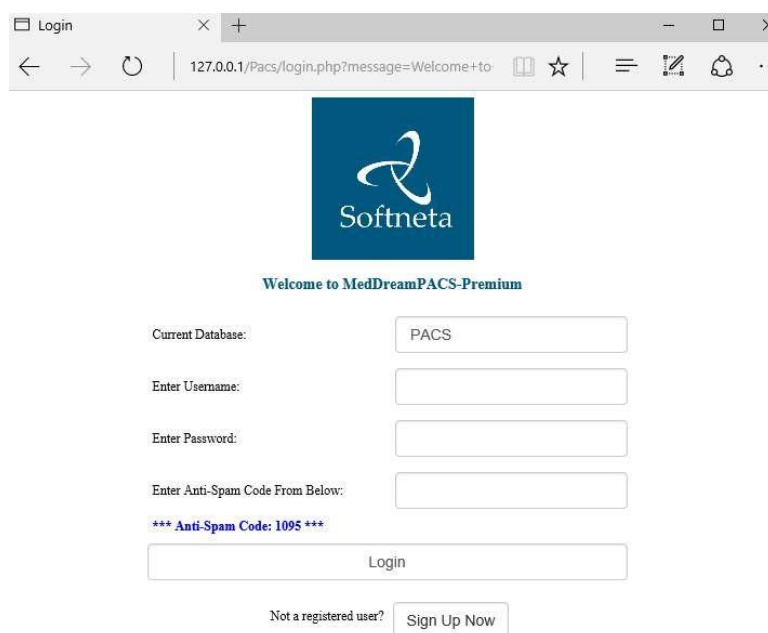


Figure 15 PACS web interface

MedDream PACS administration interface can be found <http://127.0.0.1/Pacs>

Database: your chosen database name during installation step (Figure 7).

Username: root

Password: ***your password***

5. MySQL database administrating using Adminer

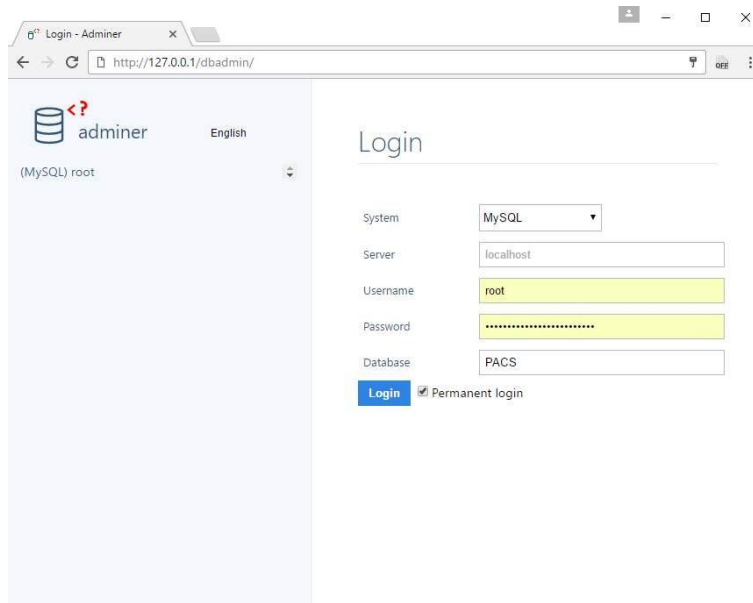


Figure 16 Adminer connection

MedDream PACS MySQL administration interface can be found <http://127.0.0.1/dbadmin>

Database: your chosen database name during installation step (Figure 7).

Username: root

Password: ***your password***

6. Uninstall

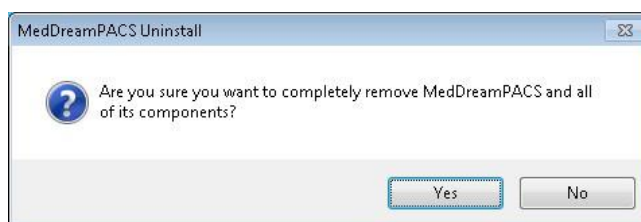


Figure 17 A confirmation window of uninstallation

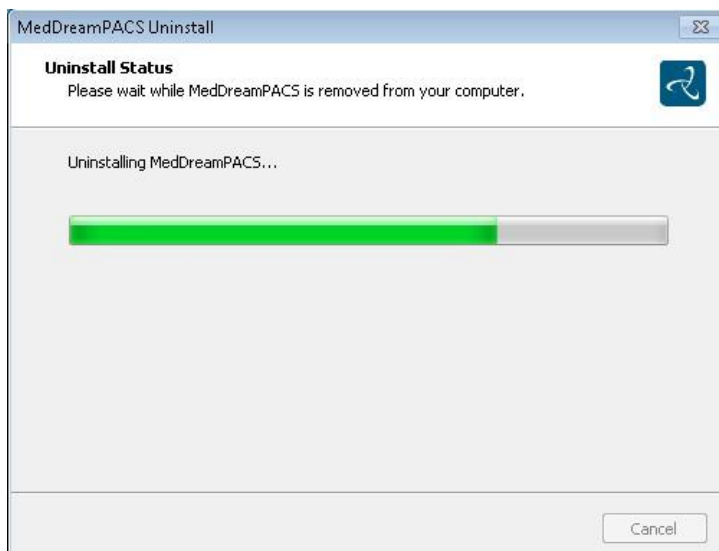


Figure 18 Uninstalling in process

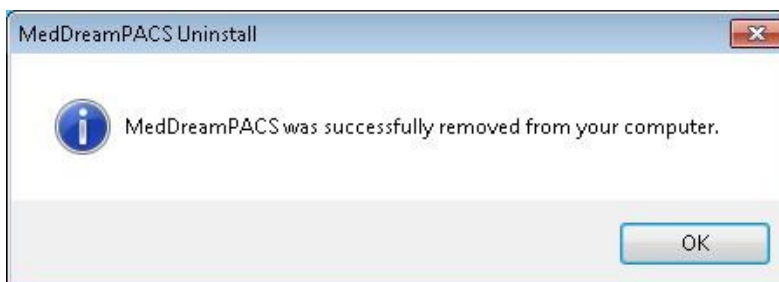


Figure 19 Confirmation that system is uninstalled



NOTE! Uninstaller will keep some directories and files what was generated after install (study DICOM files, MedDream license and logs, PACS some logs and Server MySQL database and logs)

Index

Figure 1 MedDream PACS Premium package information	6
Figure 2 Select drive to install system	6
Figure 3 Pacs AET information	7
Figure 4 Database password information	7
Figure 5 Information before install	8
Figure 6 Installation process	8
Figure 7 Microsoft Visual C++ 2005 installation	9
Figure 8 Microsoft Visual C++ Installation	9
Figure 9 PACS Server Installation	10
Figure 10 Finishing installation	11
Figure 11 Services	11
Figure 12 PACS Service.....	12
Figure 13 Processes.....	12
Figure 14 MedDream WEB interface	13
Figure 15 PACS web interface	13
Figure 16 Adminer connection	14
Figure 17 A confirmation window of unistallation	14
Figure 18 Uninstalling in process	15
Figure 19 Confirmation that system is uninstalled	15

MedDream PACS Premium is manufactured by Softneta UAB.

Softneta UAB

K. Barsausko str. 59

LT-51423 Kaunas, Lithuania

