



MedDream PACS Lite
INSTALLATION INSTRUCTIONS
(version 4.3.0.4)

© 2017, Softneta UAB, Kaunas

All rights reserved in the event of granting of patents or registration as a utility patent.

All names of companies and products mentioned in this user's manual may be trademarks or registered trademarks. References to products of other manufacturers are for information purposes only. Such references are intended neither as an approval nor a recommendation of these products. Softneta UAB accepts no liability for the performance or use of such products.

Other brand names, software and hardware names used in this user's manual are subject to trademark or patent protection. The quoting of products is for informational purposes only and does not represent a trademark misuse.

This user's manual is protected by copyright. Unless expressly authorized in writing, dissemination, duplication or other commercial exploitation of this documentation set or communication of its contents or parts of it is not permitted. In case of infringement, the violator may be liable to pay compensation for damages.

Specifications due to technical developments are subject to change. This user's manual is not subject to the revision service. Please contact the manufacturer or authorized dealer to request the latest edition of the manual.

Table of Contents

Table of Contents 3

Notes on the user`s manual 4

 Purpose and availability of documentationError! Reference source not found. 4

 Questions and commentsError! Reference source not found..... 4

 Explanation of symbols usedError! Reference source not found..... 5

Installation 6

Services 9

MedDream WEB interface..... 11

Send DICOM files to MedDream Pacs Lite server 11

MySQL database administrating with adminer 12

Uninstall..... 13

Figures..... 15

Index 16

Notes on the user`s manual

Purpose and availability of documentation

This user`s manual describes the installation procedure of MedDream PACS Lite.

Correct installation of the system is imperative for its safe and successful functioning. You should therefore ensure that you are thoroughly familiar with the instructions before starting the installation procedure.

The installation instructions and other documentation enclosed with MedDream PACS Lite should be kept accessible to users at all times to ensure that the information required for the use of MedDream PACS Lite is readily available.

MedDream PACS Lite is not intended to replace skilled and qualified medical professional. The software should only be used by people who have been trained and is acquainted with its functions, capabilities and limitations.

Users must be aware that the quality, accuracy and correctness of the output data displayed on the screen, printed or sent from MedDream PACS Lite depends on the quality, accuracy and correctness of the input data, the user`s interface with the data, the quality, calibration and other parameters of printer or monitoring device.

MedDream PACS Lite has been tested extensively, however, it is possible that errors may remain/emerge in the software. Users must be aware of the potential for errors and in case of an error or for other assistance, please contact Softneta UAB Customer support:

- write an e-mail info@softneta.com

Questions and comments

If you have any questions or comments regarding this user`s manual, please contact Softneta UAB Customer support.

Explanation of symbols used

The symbols used in this daily workflow refer to important safety information which warn against possible health risks or fatal injuries and contain useful notes. Whenever you see these symbols, read the accompanying information carefully and observe all safety notes and information in the user manual, daily workflow and on the device labels.

WARNING

Indicates a hazardous situation which may result in a fatal or serious bodily injury if the appropriate safety precautions are not heeded.



CAUTION

Indicates a hazardous situation which may result in a minor injury if the appropriate safety precautions are not heeded.



CAUTION – PROPERTY DAMAGE

Indicates possible device damage if the appropriate safety precautions are not heeded.



Information, hints and advice for a better understanding of the instructions to be observed in the operation of the instrument.

Installation

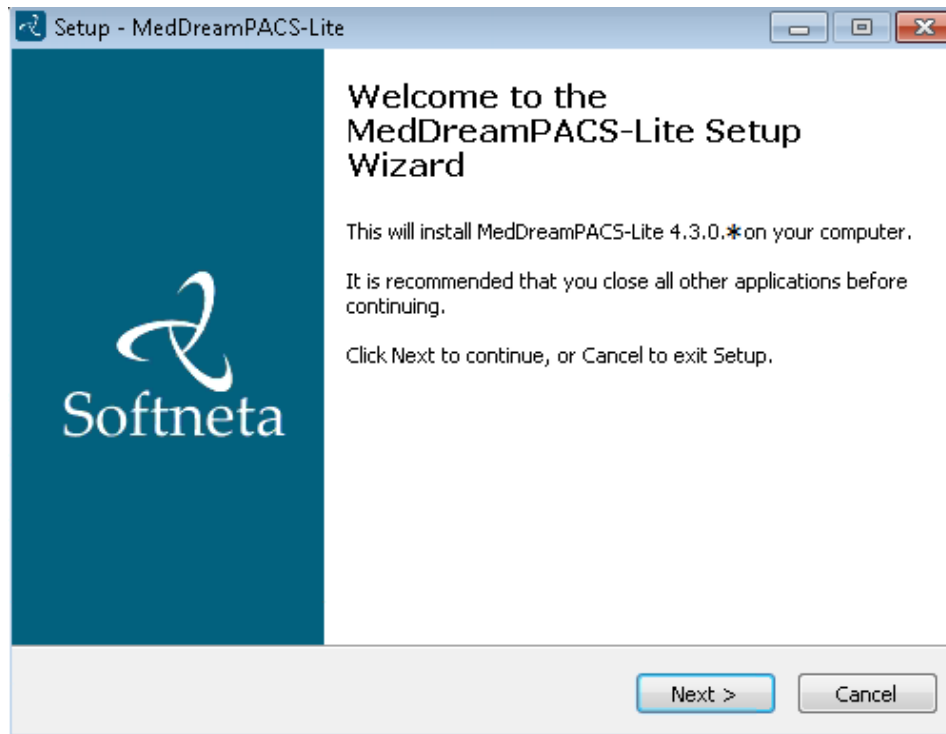


Figure 1. Setup Wizard.

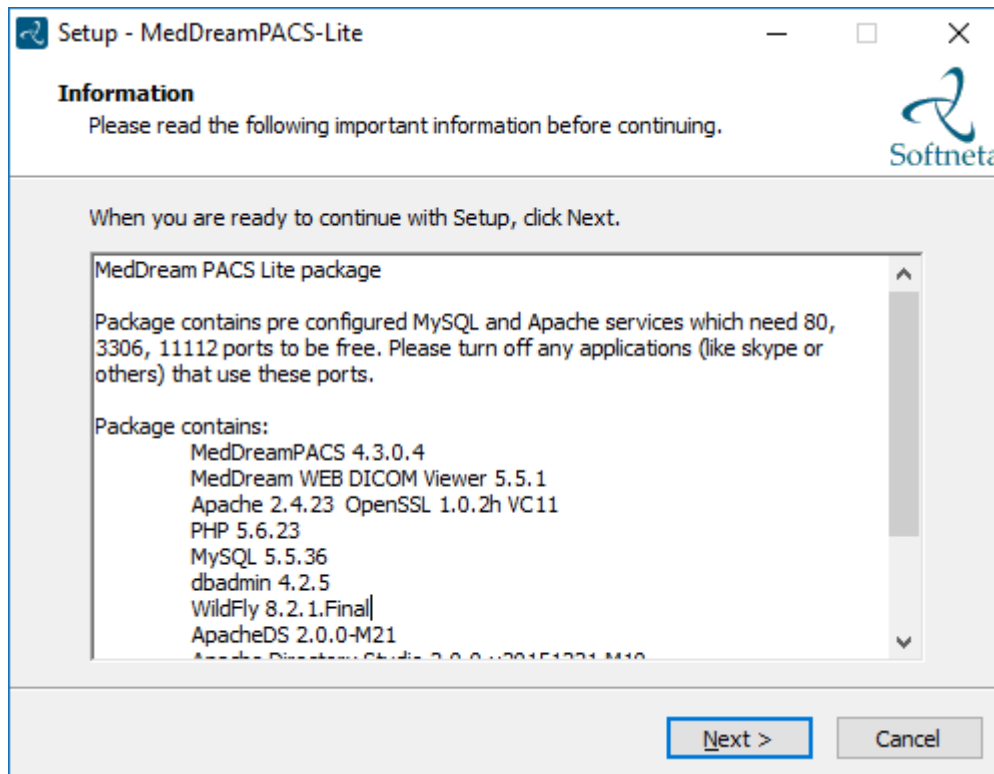


Figure 2. MedDream PACS Lite package information.

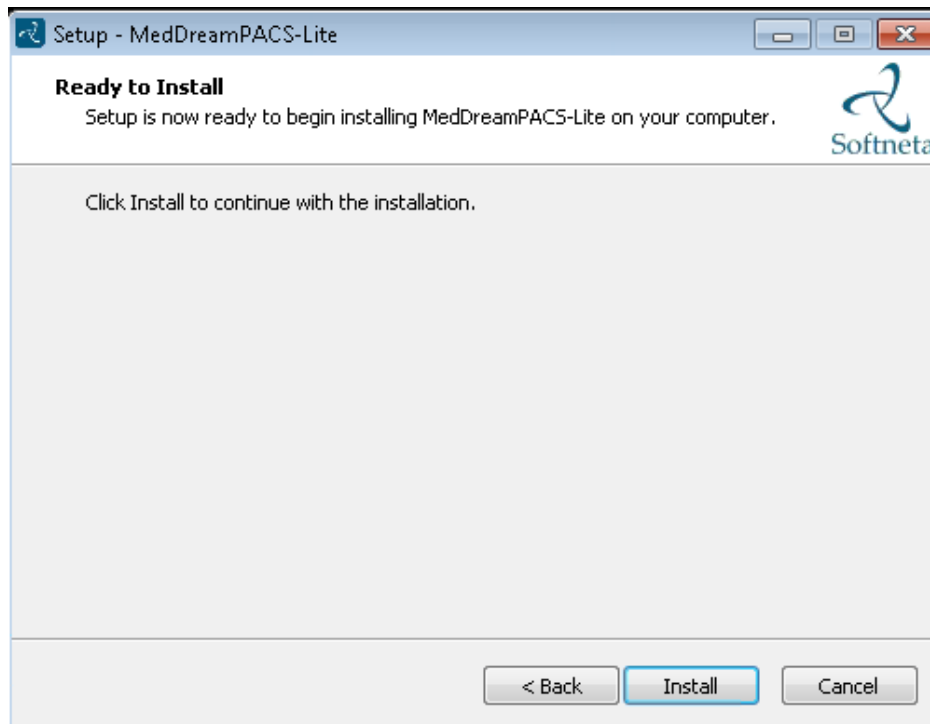


Figure 3. Beginning of installation.

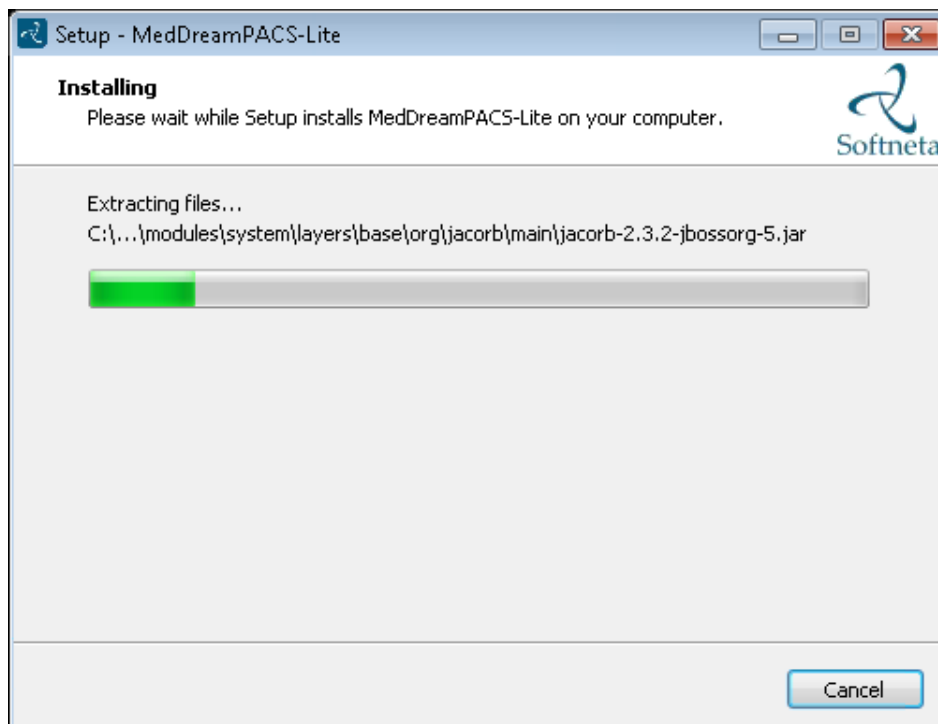


Figure 4. Installation.

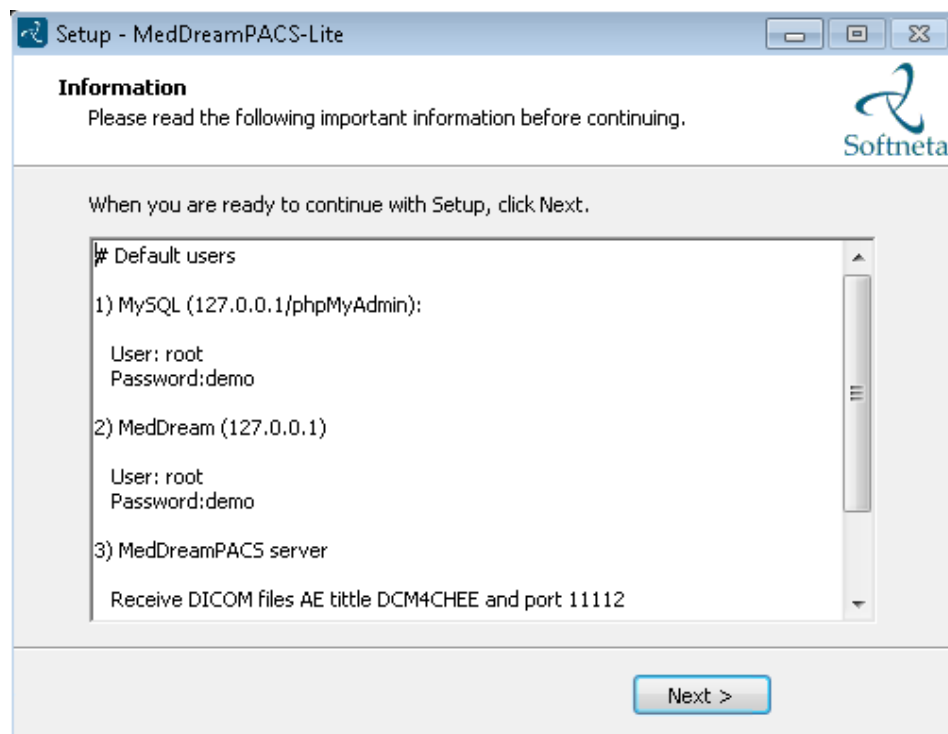


Figure 5. Important information.



Connection information also can be found in C:/MedDreamPACS-Lite/passwords.txt".

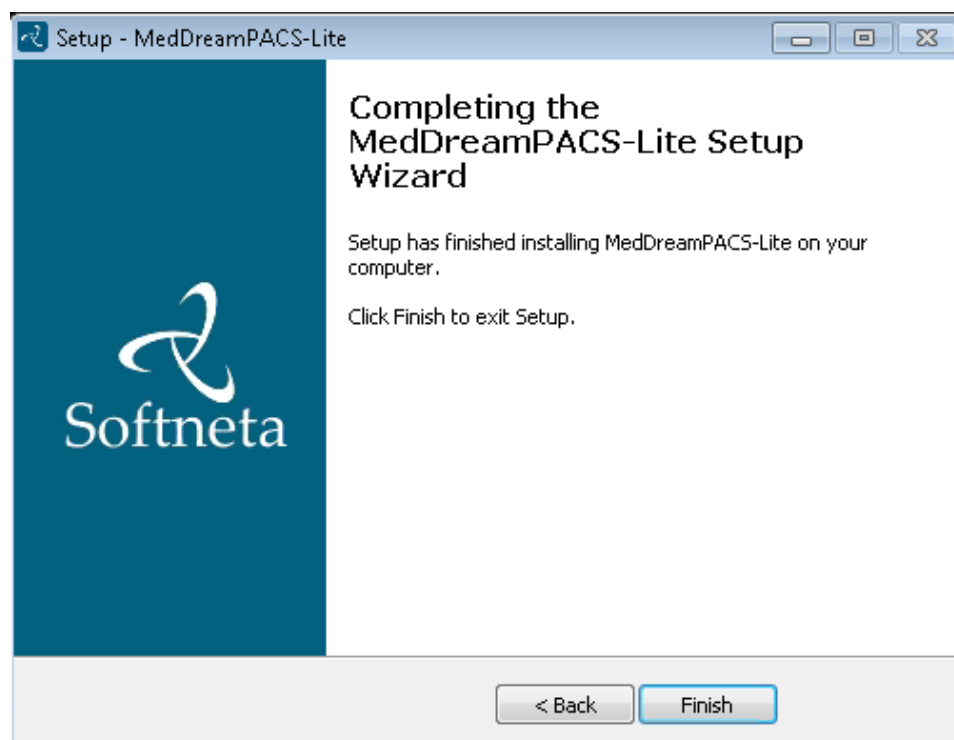


Figure 6. Installation completion.

Services



Ensure that all 4 services (MedDrean Pacs Lite apache, apacheds-default, MedDrean Pacs Lite MySQL, Wildfly) are installed and running.

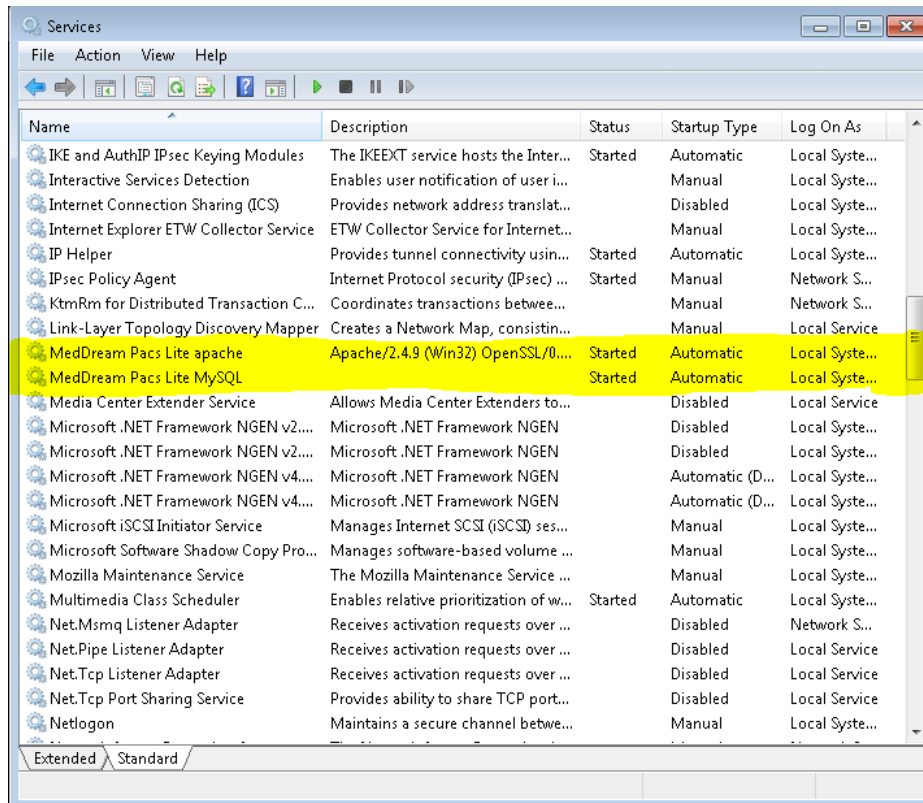


Figure 7. MedDrean Pacs Lite apache, MedDrean Pacs Lite MySQL services.

If **MedDrean Pacs Lite apache** service not running or can't start up please check is 80 free.

MedDrean Pacs Lite MySQL Database server use 3306 port.

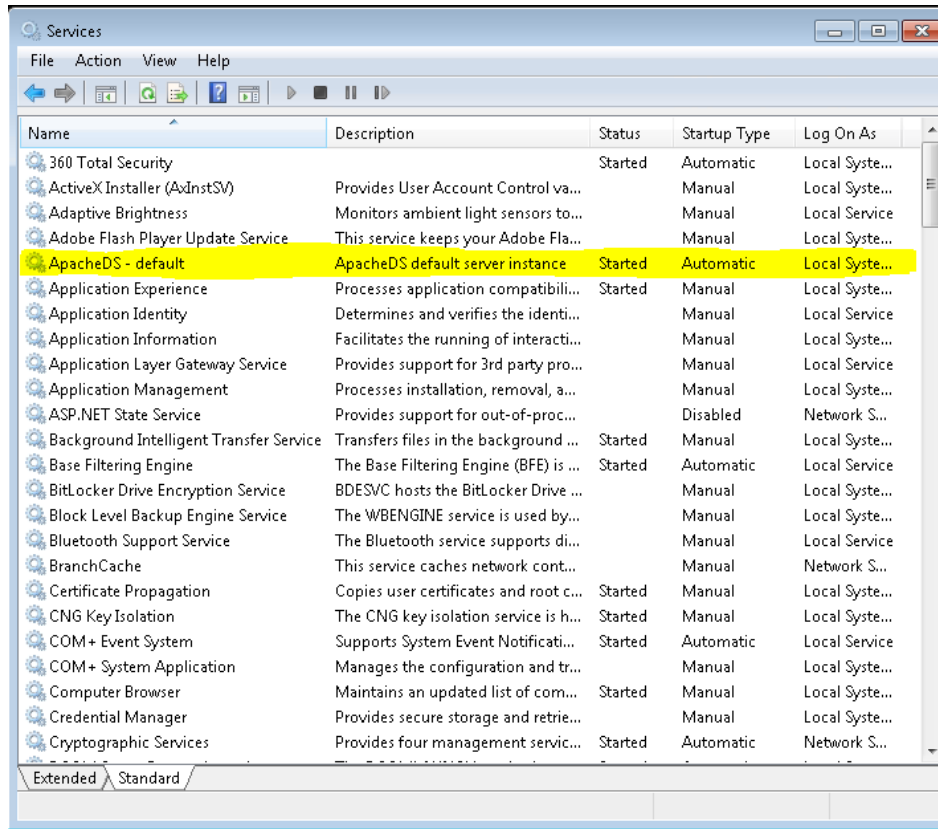


Figure 8. ApacheDS - default service.

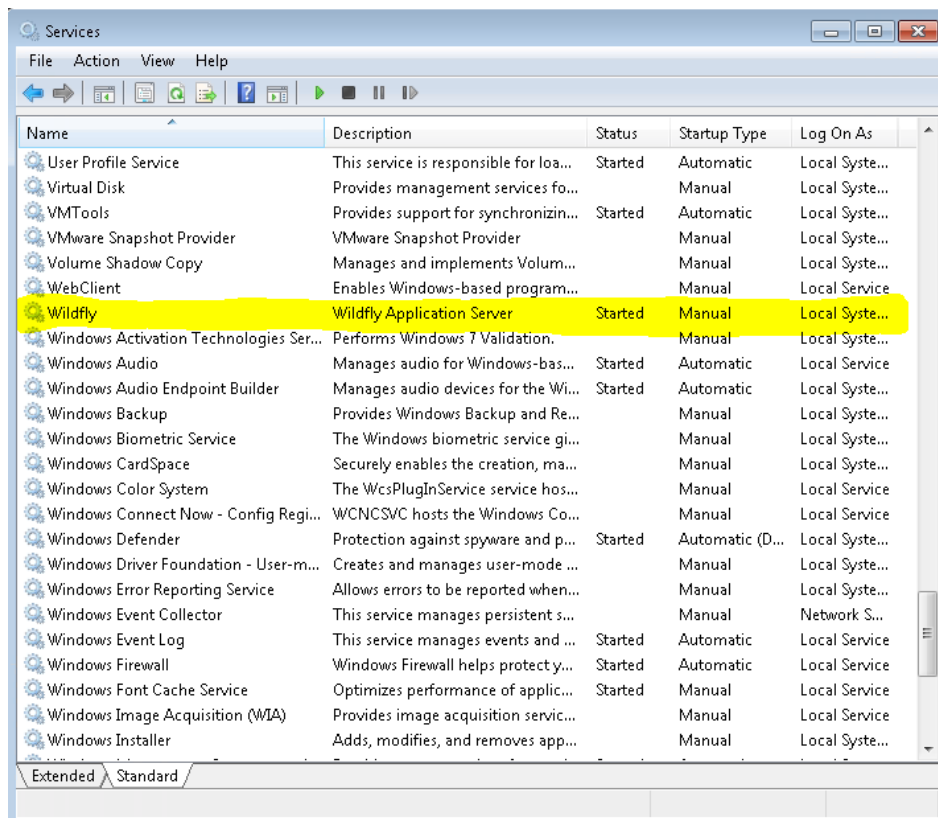


Figure 9. Wildfly service.

Sometimes in unknown reasons “Wildfly” service will not be installed automatically. If you can’t find “Wildfly” service, please use these shortcut files from “C:/MedDreamPACS/Server” in these order:

- wildfly_install
- wildfly_start
- wildfly_autostart

MedDream WEB interface

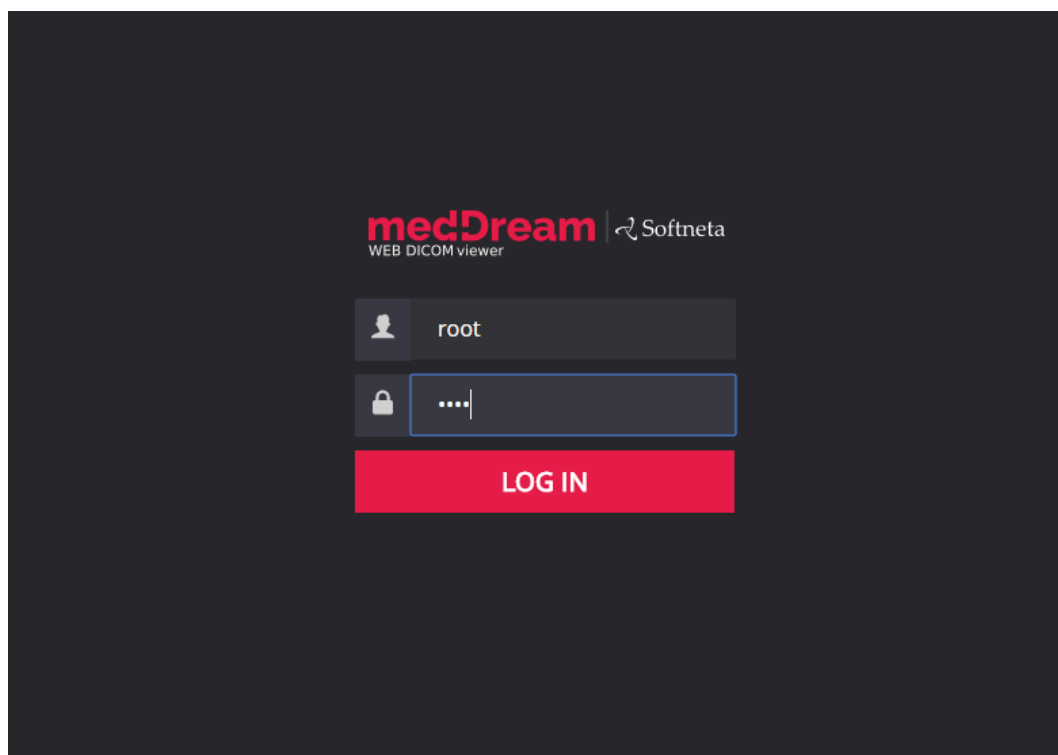


Figure 10. MedDream WEB interface.

MedDream DICOM viewer is set as root directory of web service and can be found <http://127.0.0.1>

Database: dcm4chee

Username: root

Password: demo

Send DICOM files to MedDream Pacs Lite server

MedDreamPACS Lite server receiving DICOM files from all devices if they send them using IP your server AE tittle **DCM4CHEE** and port **11112**

Title:	DCM4CHEE
Description:	DCM4CHEE
Host:	127.0.0.1
IP:	127.0.0.1
Port:	11112

Figure 11. MedDream Pacs server parameters example on SendToPacs software from local computer to send DICOM file to local server

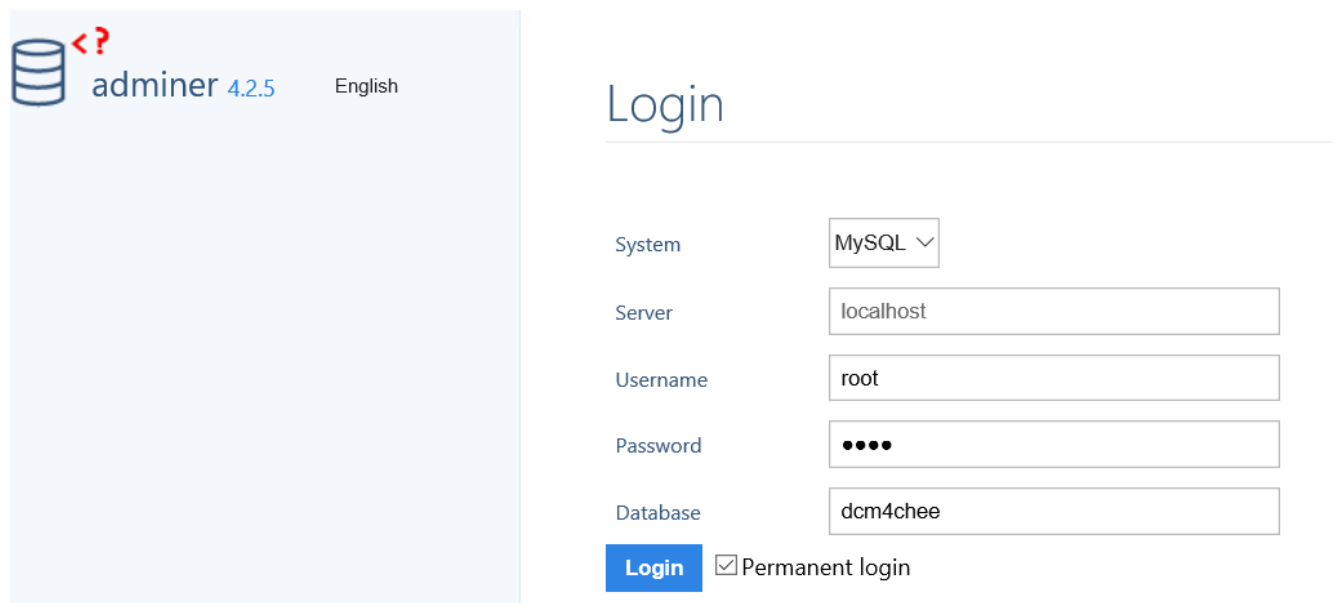
MySQL database administrating with adminer

<http://127.0.0.1/dbadmin>

Username: root

Password: demo

Database: dcm4chee



System	MySQL ▾
Server	localhost
Username	root
Password	••••
Database	dcm4chee
<input type="button" value="Login"/>	<input checked="" type="checkbox"/> Permanent login

Figure 12. adminer connection.

Uninstall

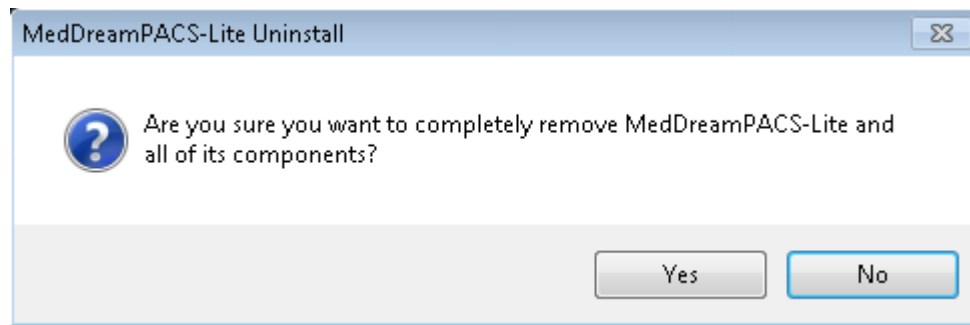


Figure 13. A confirmation window of uninstallation.

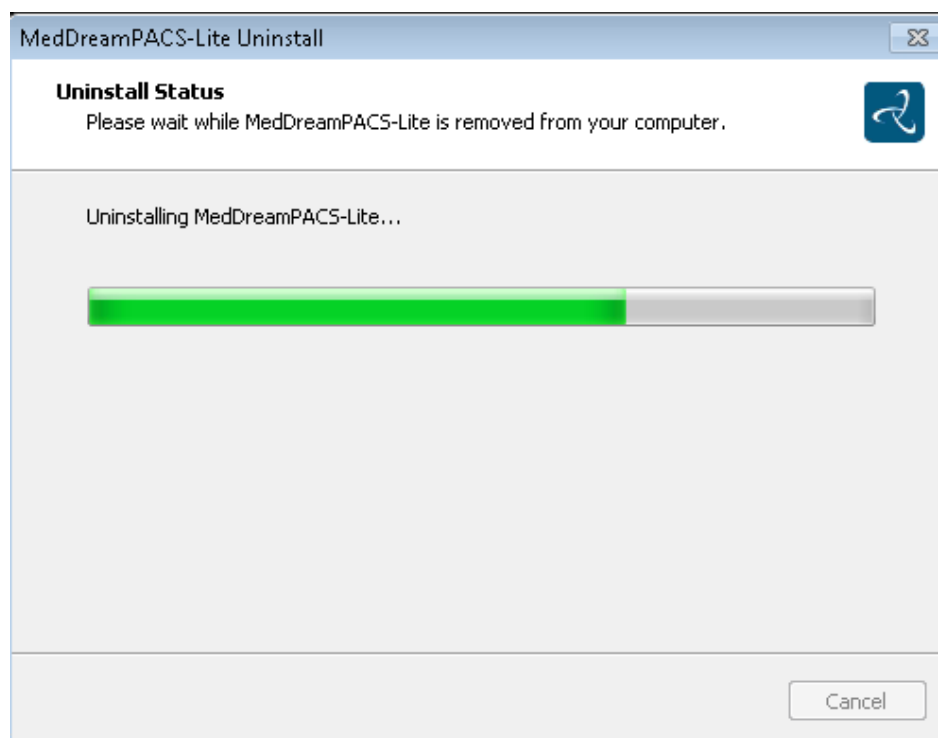


Figure 14. Uninstalling.

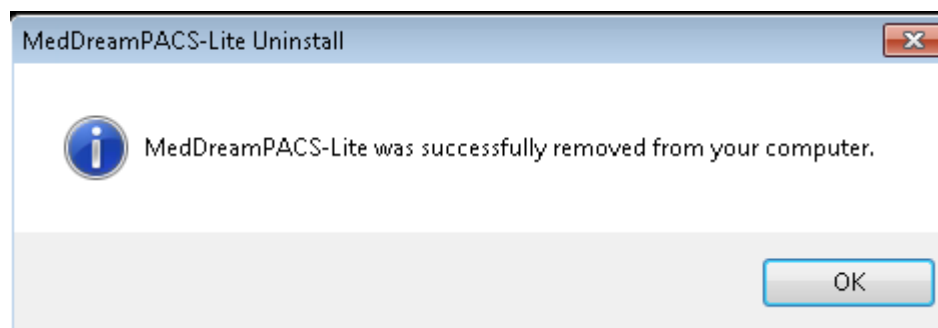


Figure 15. Confirmation that system is uninstalled.

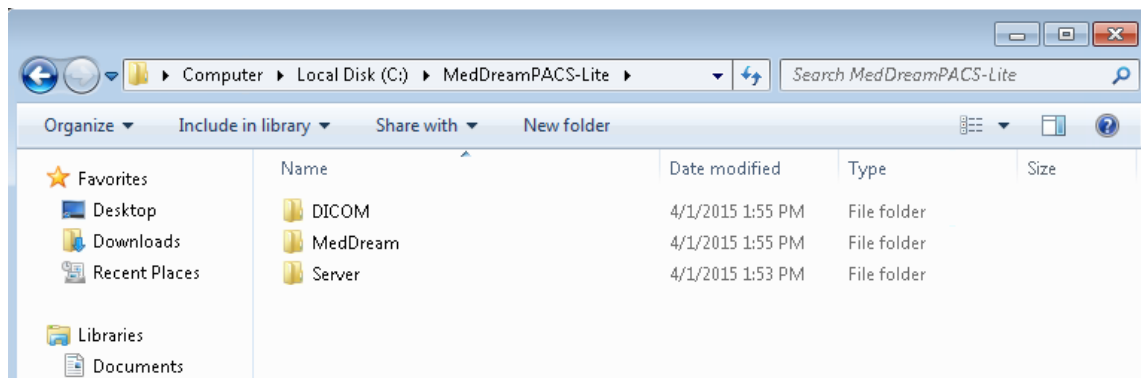


Figure 16. Saved files after uninstallation.

Uninstallator will keep some directories and files what was generated after install (study DICOM files, MedDream license and Server MySQL database and logs).

Figures

Figure 1. Setup Wizard.....	6
Figure 2. MedDream PACS Lite package information.....	6
Figure 3. Beginning of installation.....	7
Figure 4. Installation.....	7
Figure 5. Important information.....	8
Figure 6. Installation completion.....	8
Figure 7. MedDrean Pacs Lite apache, MedDrean Pacs Lite MySQL services.....	9
Figure 8. ApacheDS - default service.....	10
Figure 9. Wildfly service.....	10
Figure 10. MedDream WEB interface.....	11
Figure 11. MedDream Pacs server parameters example on SendToPacs software from local computer to send DICOM file to local server.....	12
Figure 12. phpMyAdmin connection.....	12
Figure 13. A confirmation window of uninstallation.....	13
Figure 14. Uninstalling.....	13
Figure 15. Confirmation that system is uninstalled.....	13
Figure 16. Saved files after uninstallation.....	14

Index

F	
Figures.....	15
I	
Installation.....	6
M	
MedDream WEB interface.....	11
Mysql database administrating with phpMyAdmin	12
N	
Notes on the user`s manual	4
S	
Send DICOM files to MedDream Pacs Lite server	11
Services	9
U	
Uninstall.....	13

MedDream PACS Lite is manufactured by Softneta UAB.

Softneta UAB
Barsausko str. 59
51423 Kaunas, Lithuania