



**MedDrean PACS Premium  
INSTALLATION INSTRUCTION**

---

---

© 2019, Softneta UAB, Kaunas

All rights reserved in the event of granting of patents or registration as a utility patent.

All names of companies and products mentioned in this user's manual may be trademarks or registered trademarks. References to products of other manufacturers are for information purposes only. Such references are intended neither as an approval nor a recommendation of these products. Softneta UAB accepts no liability for the performance or use of such products.

Other brand names, software and hardware names used in this user's manual are subject to trademark or patent protection. The quoting of products is for informational purposes only and does not represent a trademark misuse.

This user's manual is protected by copyright. Unless expressly authorized in writing, dissemination, duplication or other commercial exploitation of this documentation set or communication of its contents or parts of it is not permitted. In case of infringement, the violator may be liable to pay compensation for damages.

Specifications due to technical developments are subject to change. This user's manual is not subject to the revision service. Please contact the manufacturer or authorized dealer to request the latest edition of the manual.

---

# Table of Contents

- Table of Contents..... 3**
- Notes on the user`s manual ..... 4**
  - Purpose and availability of documentation ..... 4
  - Questions and comments..... 4
  - Explanation of symbols used..... 5
- Installation..... 6**
- Services and processes ..... 12**
- MedDream WEB interface..... 15**
- MedDream PACS administrating interface..... 16**
- Setup MedDream Pacs server to receive DICOM files..... 17**
- Mysql database administrating with phpMyAdmin..... 20**
- Uninstall..... 21**
- Index ..... 24**

---

## Notes on the user`s manual

### Purpose and availability of documentation

This user`s manual describes the installation procedure of MedDream PACS Premium.

Correct installation of the system is imperative for its safe and successful functioning. You should therefore ensure that you are thoroughly familiar with the instructions before starting the installation procedure.

The installation instructions and other documentation enclosed with MedDream PACS Premium should be kept accessible to users at all times to ensure that the information required for the use of MedDream PACS Premium is readily available.

MedDream PACS Premium is not intended to replace skilled and qualified medical professional. The software should only be used by people who have been trained and is acquainted with its functions, capabilities and limitations.

Users must be aware that the quality, accuracy and correctness of the output data displayed on the screen, printed or sent from MedDream PACS Premium depends on the quality, accuracy and correctness of the input data, the user`s interface with the data, the quality, calibration and other parameters of printer or monitoring device.

MedDream PACS Premium has been tested extensively, however, it is possible that errors may remain/emerge in the software. Users must be aware of the potential for errors and in case of an error or for other assistance, please contact Softneta UAB Customer support:

- write an e-mail [info@softneta.com](mailto:info@softneta.com)

### Questions and comments

If you have any questions or comments regarding this user`s manual, please contact Softneta UAB Customer support.

## Explanation of symbols used

The symbols used in this daily workflow refer to important safety information which warn against possible health risks or fatal injuries and contain useful notes. Whenever you see these symbols, read the accompanying information carefully and observe all safety notes and information in the user manual, daily workflow and on the device labels.

### WARNING

Indicates a hazardous situation which may result in a fatal or serious bodily injury if the appropriate safety precautions are not heeded.



### CAUTION

Indicates a hazardous situation which may result in a minor injury if the appropriate safety precautions are not heeded.



### CAUTION – PROPERTY DAMAGE

Indicates possible device damage if the appropriate safety precautions are not heeded.



Information, hints and advice for a better understanding of the instructions to be observed in the operation of the instrument.

## Installation

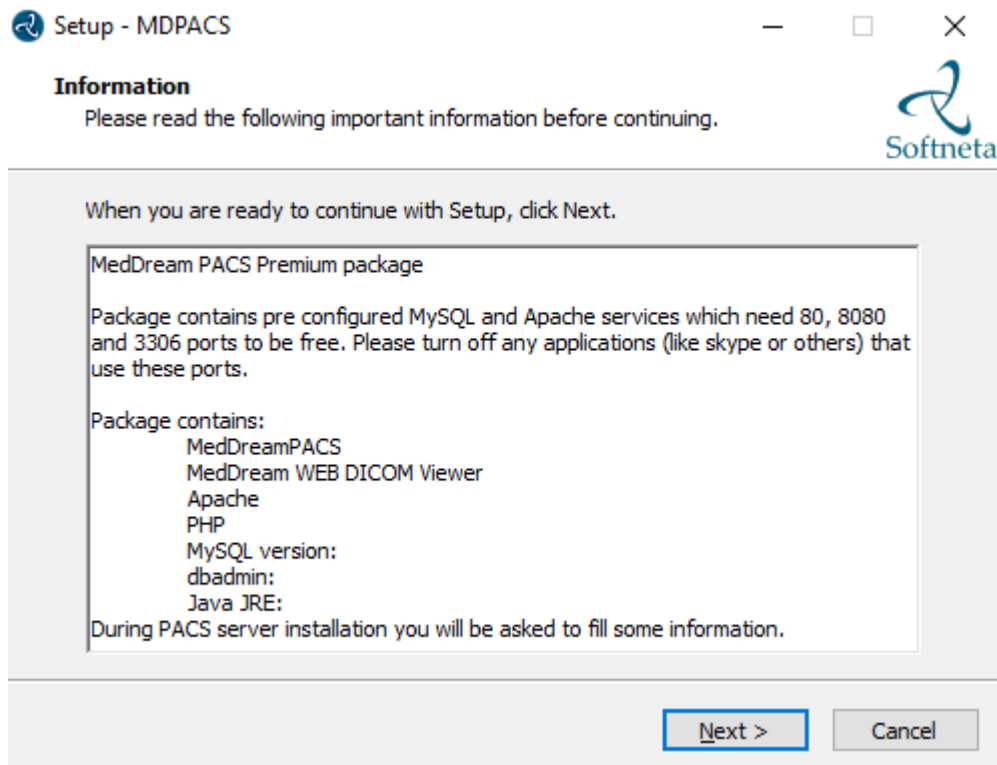


Figure 1. MedDream PACS Premium package information.

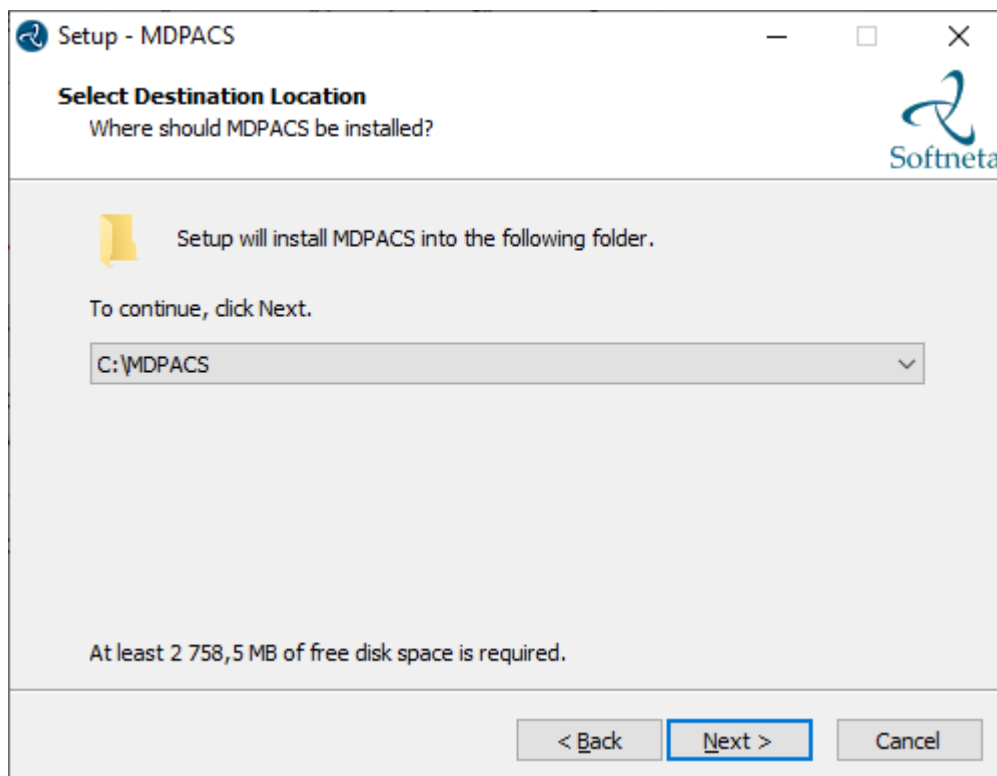


Figure 2. Select drive to install system.

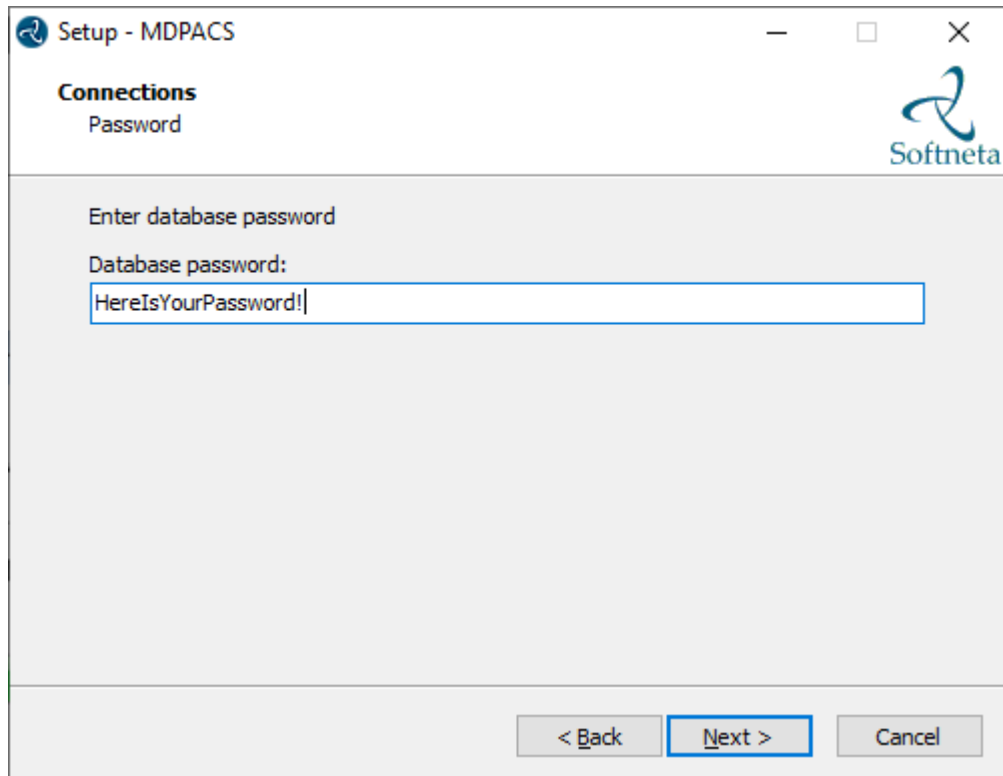


Figure 3. Password information.

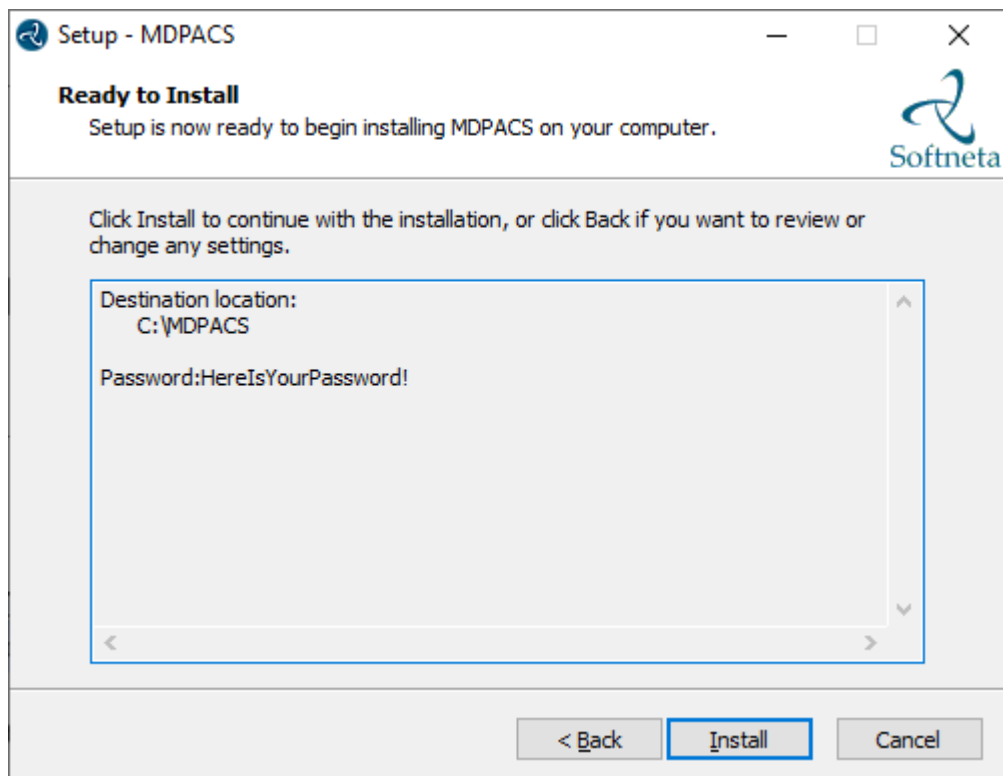


Figure 4. Information before install.

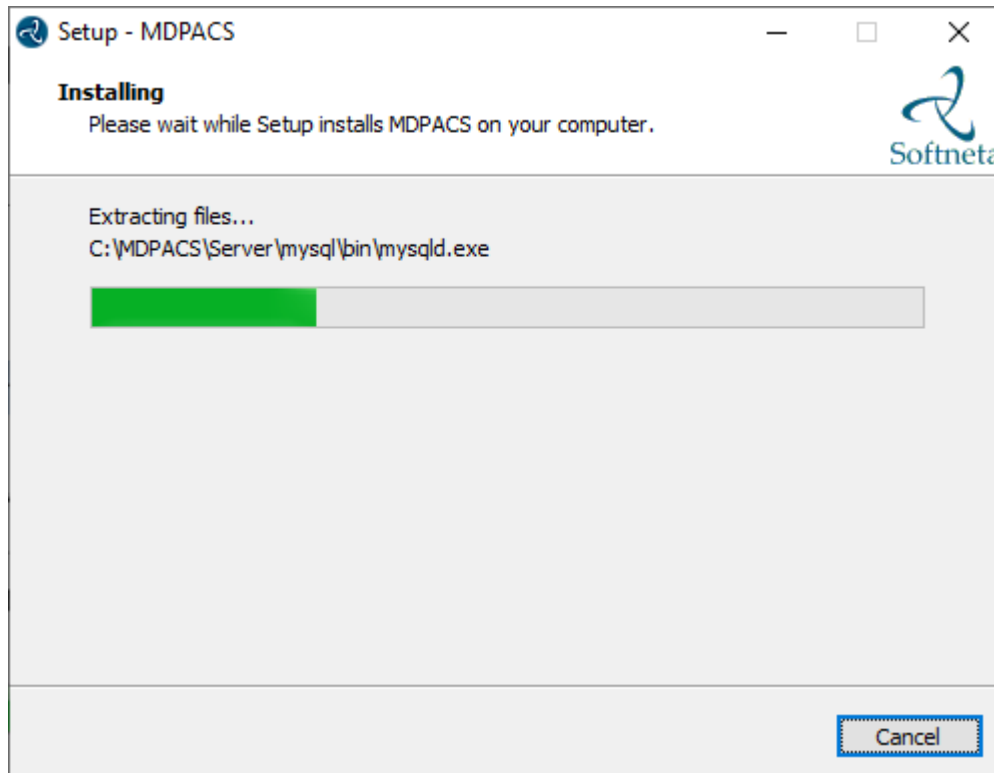


Figure 5. Installation.

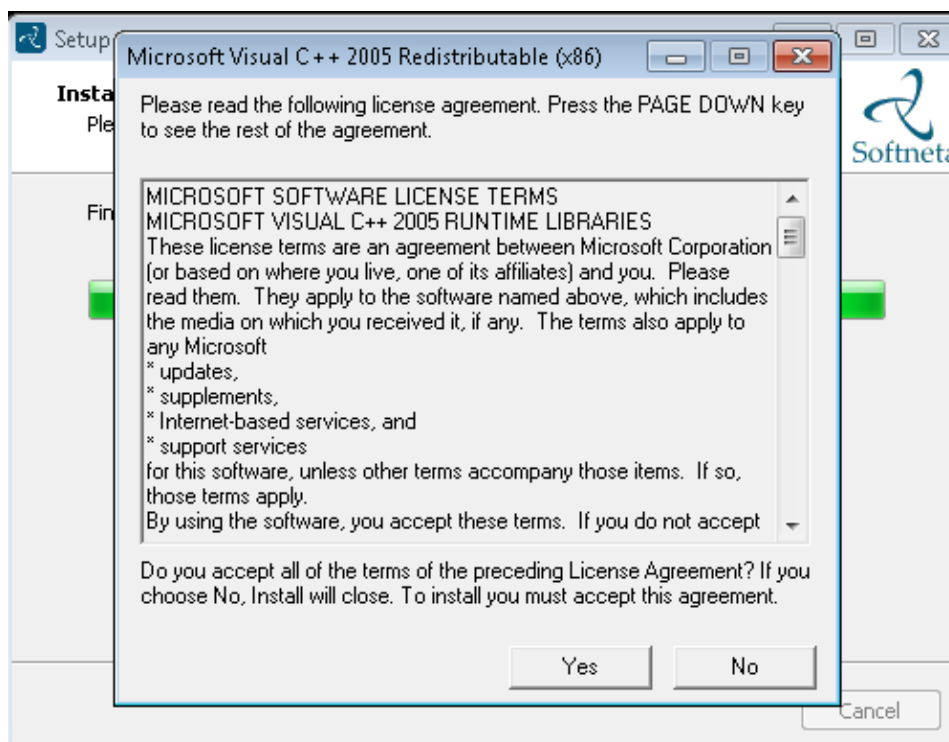


Figure 6. Microsoft Visual C++ 2005 installation.

Microsoft Visual C++ 2005 must be installed when it will be asked by installer



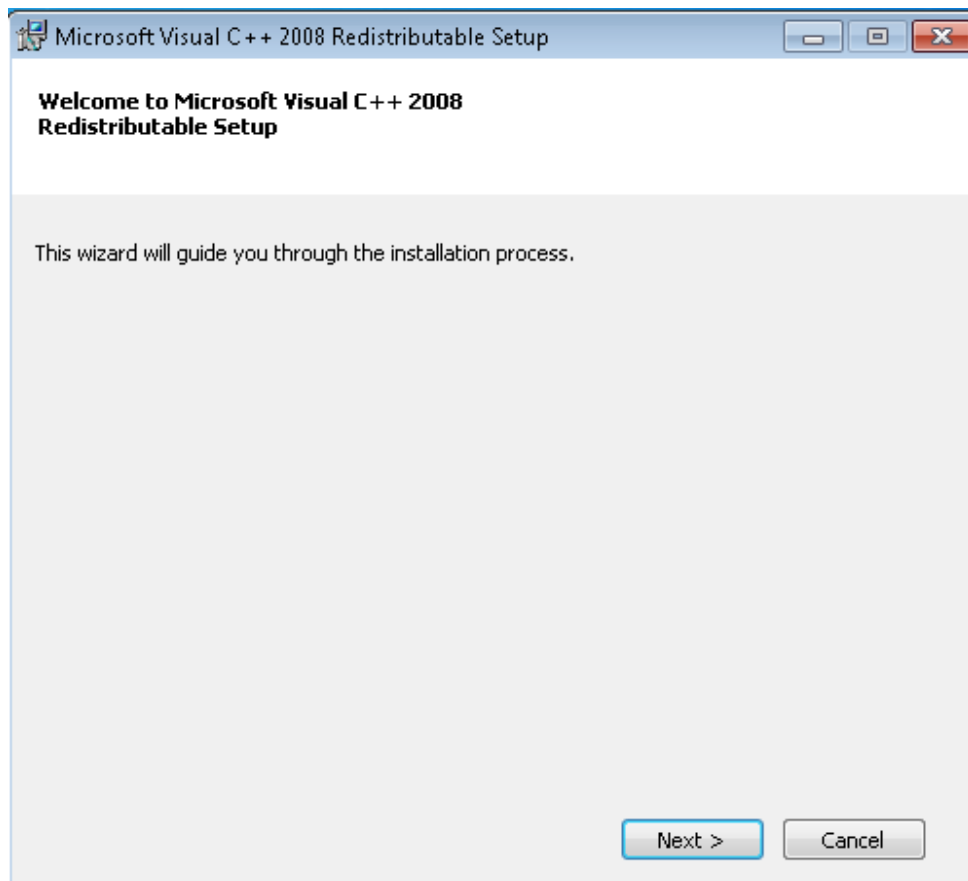


Figure 7. Microsoft Visual C++ 2008 installation

Microsoft Visual C++ 2008 must be installed when it will be asked by installer

The screenshot shows the 'MedDreamPACS-Premium Installer' window with the following configuration fields:

- DICOM:**
  - Application Entity Title: PACS
  - Server Port: 104
  - Log File Directory: C:\MDPACS\PACS\log
- Database:**
  - Database Host: localhost
  - Database Name: PACS
  - Username: dicom
  - Password: \*\*\*\*\*
- Storage:**
  - Default Archive Directory: C:\MDPACS\DICOM
  - Archive Format: DicomPart10 (Default)
- HL-7 Message Listener Option:**
  - Enable HL-7 Message Listener Option
  - HL-7 Listener Port: 7777
  - HL-7 Message Persistence: 90 Days

Buttons at the bottom: Upgrade, Install, Uninstall, Cancel.

Figure 8. PACS server installation

Please fill right information:

- Application Entity Title - your AET which will be used for receiving studies
- Server port - usually it's 104 but can be other and make sure that this port are free and open in firewall
- Database Name - there write how your database will be called
- Username - can be different, default DICOM and response only from service to database connection
- Password - create password for user above
- Default Archive Directory is : C:\MDPACS\DICOM

Press install and you will be asked to insert MySQL user and password (default: root / demo).



Also all required or commended info will be shown during installation process.

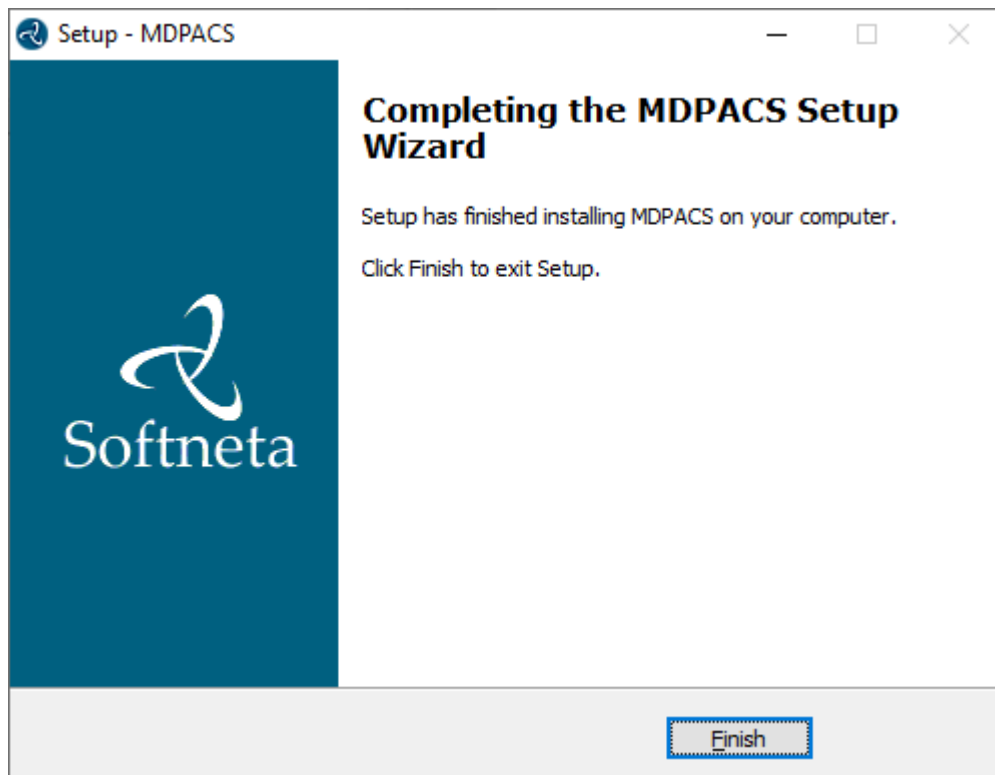



Figure 9. Finishing installation.

## Services and processes

 Ensure that all 3 services (Apache2.4, MySQL,PACS ) installed and running.

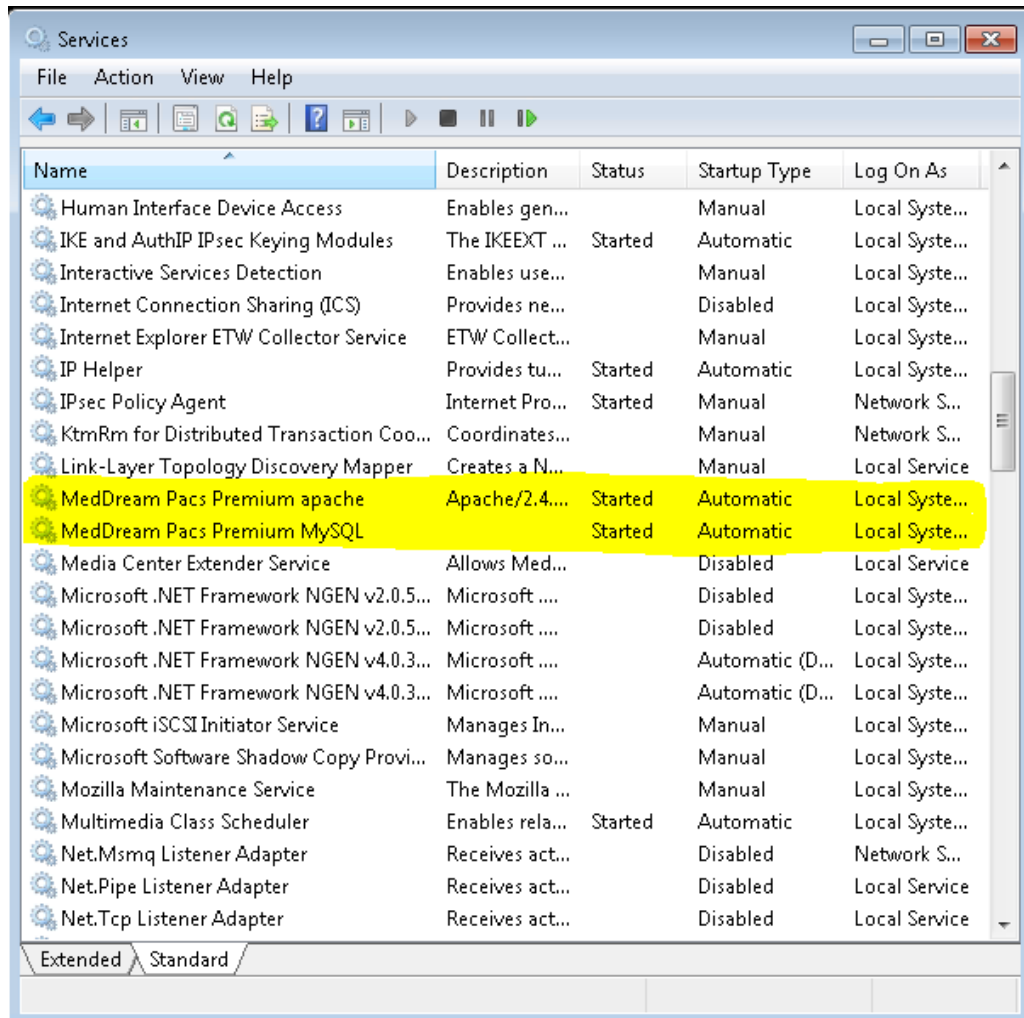


Figure 10. Services.

If **MedDream Pacs Premium apache** service not running or can't start up please check is 80 free.

**MedDream Pacs Premium MySQL** Database server use 3306 port.

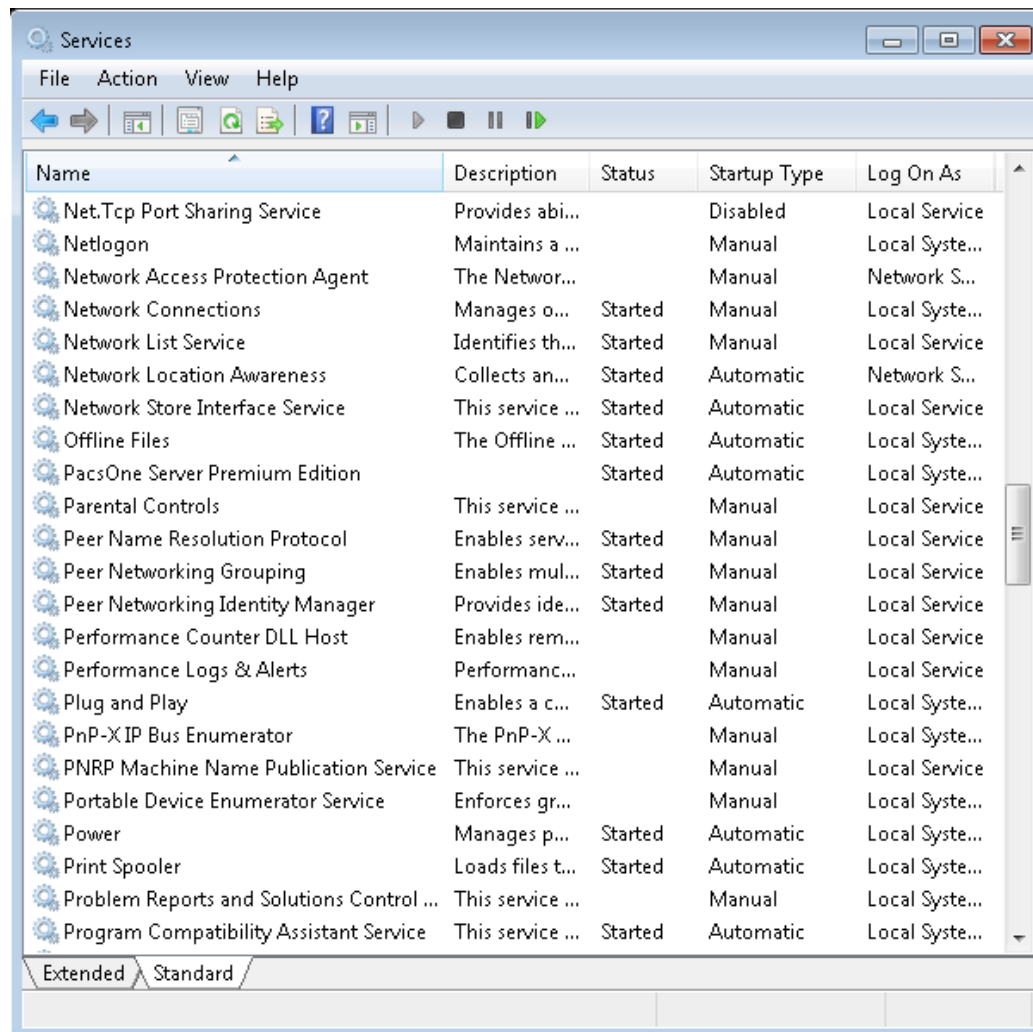


Figure 11. PACS service

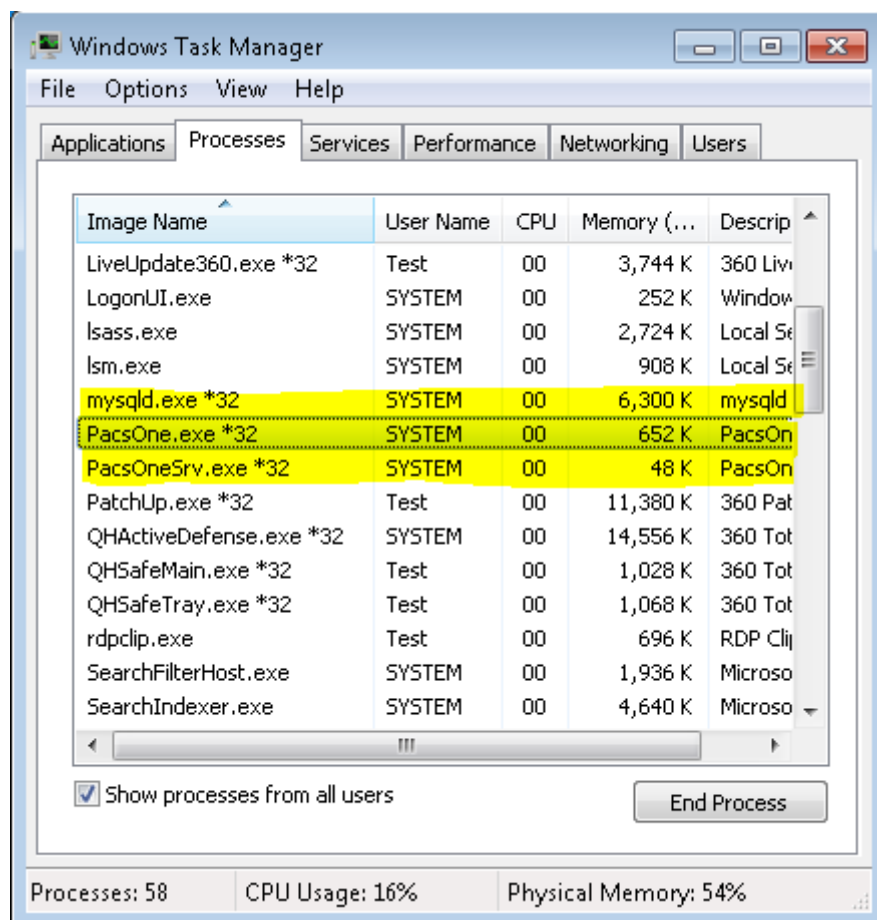


Figure 12. Processes

Be sure that both PACS processes running on machine also mysql.exe and httpd.exe shows in this tab.

## MedDream WEB interface

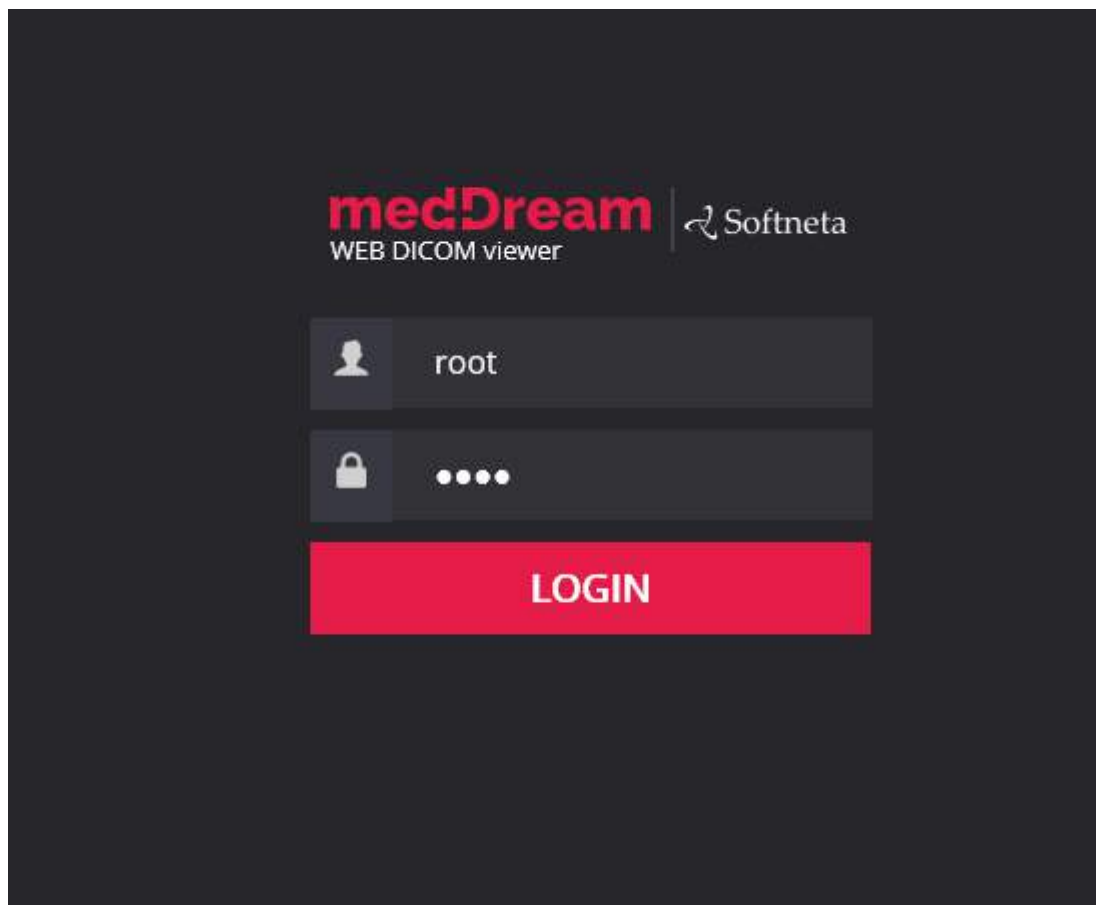


Figure 13. MedDream WEB interface.

MedDream WEB DICOM viewer is set as root directory of web service and can be found <http://127.0.0.1>

**Database:** your chosen database name during installation step Figure 7.

**Username:** root

**Password:** \*\*\*your password\*\*\*

## MedDream PACS administrating interface

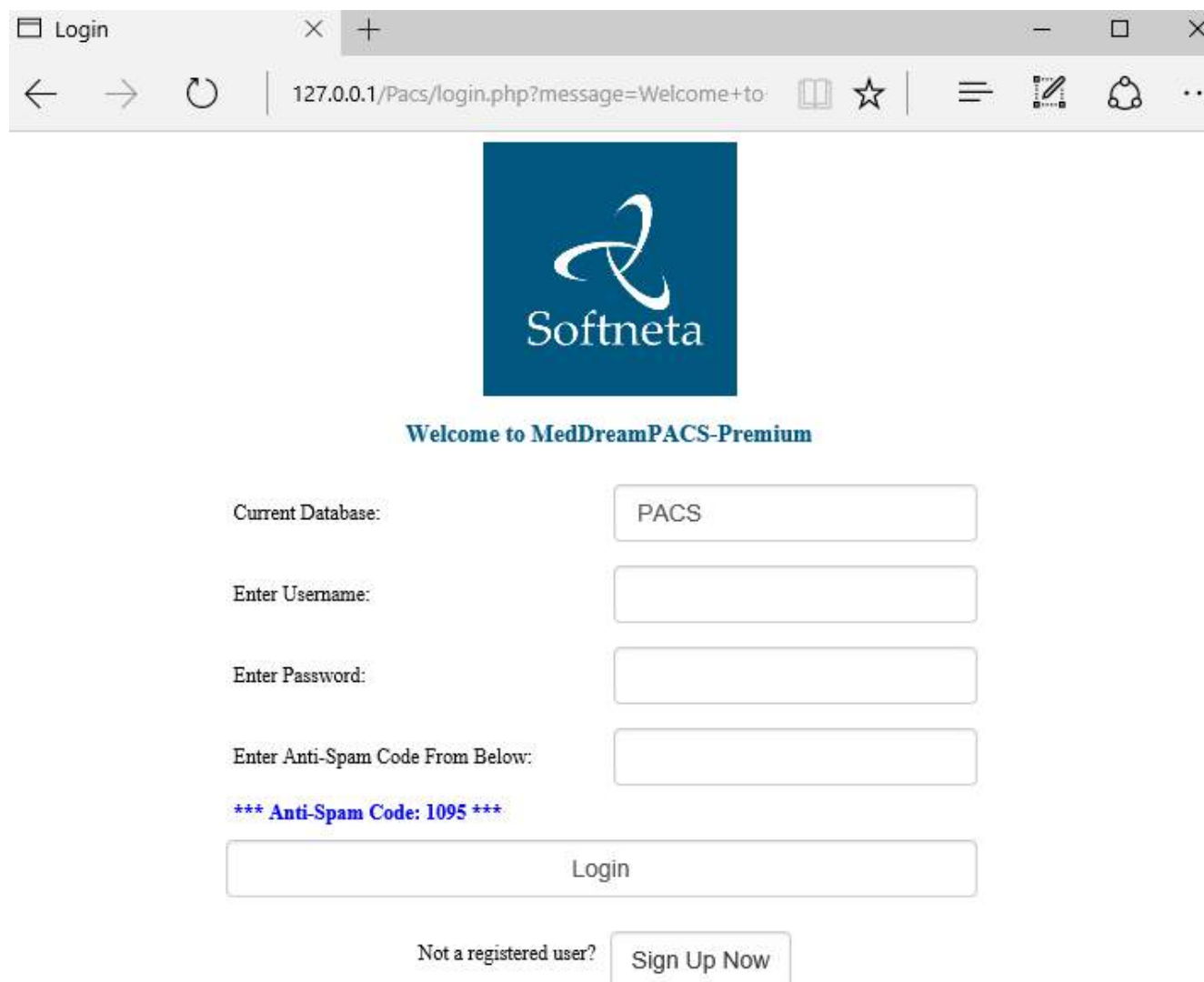


Figure 14 shows the MedDream PACS Premium login interface. The browser address bar displays the URL `127.0.0.1/Pacs/login.php?message=Welcome+to`. The page features the Softneta logo and a welcome message: "Welcome to MedDreamPACS-Premium". The login form includes the following fields and buttons:

- Current Database: PACS
- Enter Username: [Text Input]
- Enter Password: [Text Input]
- Enter Anti-Spam Code From Below: [Text Input]
- \*\*\* Anti-Spam Code: 1095 \*\*\*
- Login [Button]
- Not a registered user? [Sign Up Now] [Button]

Figure 14. PACS web interface.

MedDream PACS administration panel can be found <http://127.0.0.1/Pacs>

**Database:** your chosen database name

**Username:** root

**Password:** \*\*\*your password\*\*\*



## Setup MedDream PACS server to receive DICOM files

1. Login in to MedDream PACS (Figure 13.)
2. Go to Dicom AE and press add

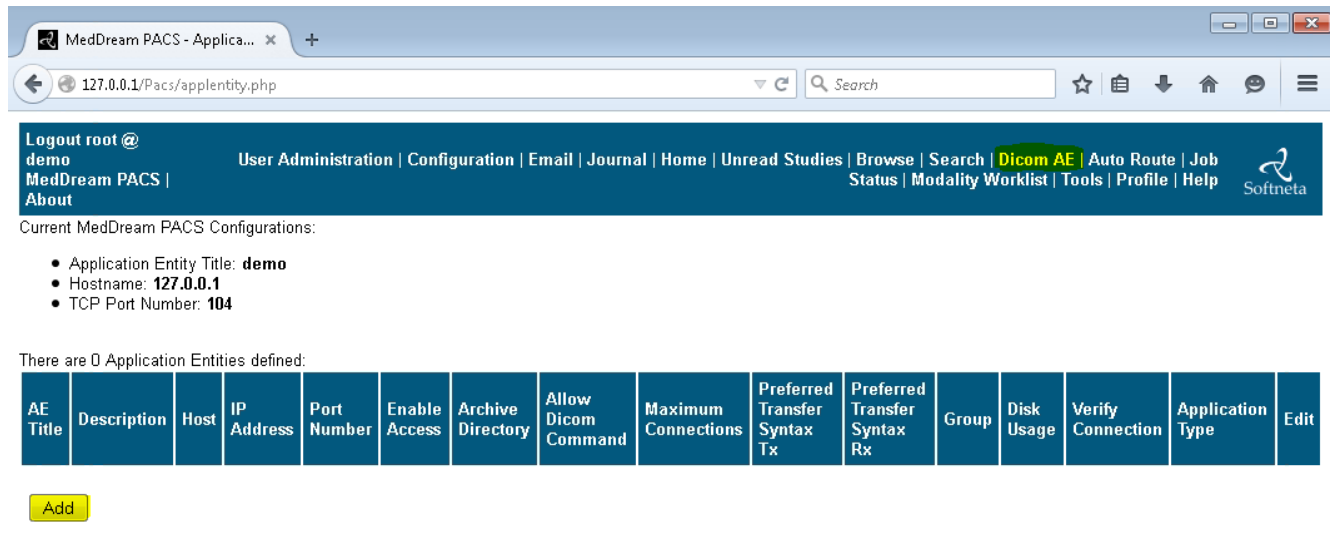


Figure 15. DICOM AE administrating

3. Fill next form with your DICOM device information

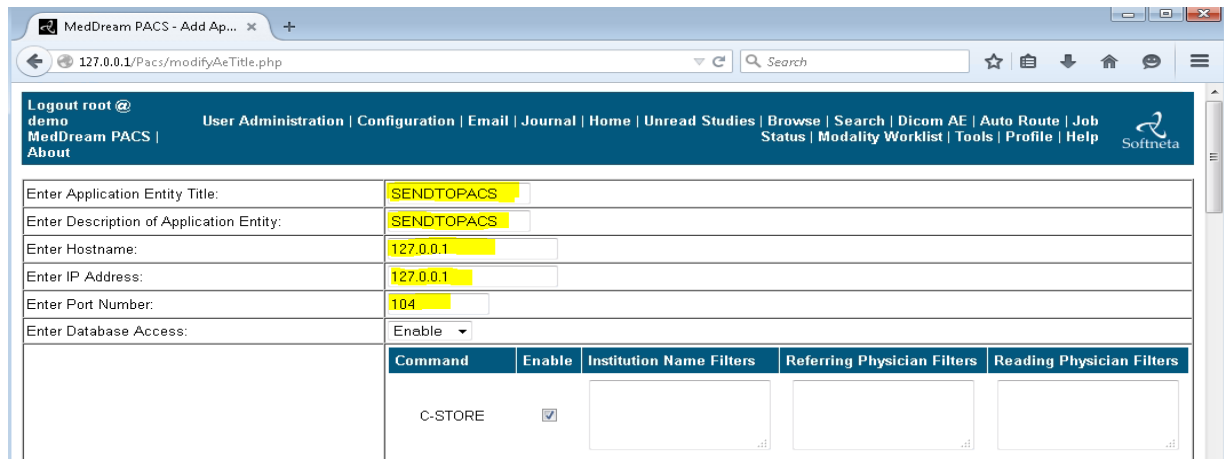


Figure 16. DICOM device information

4. Go to the bottom of the page and press “add”

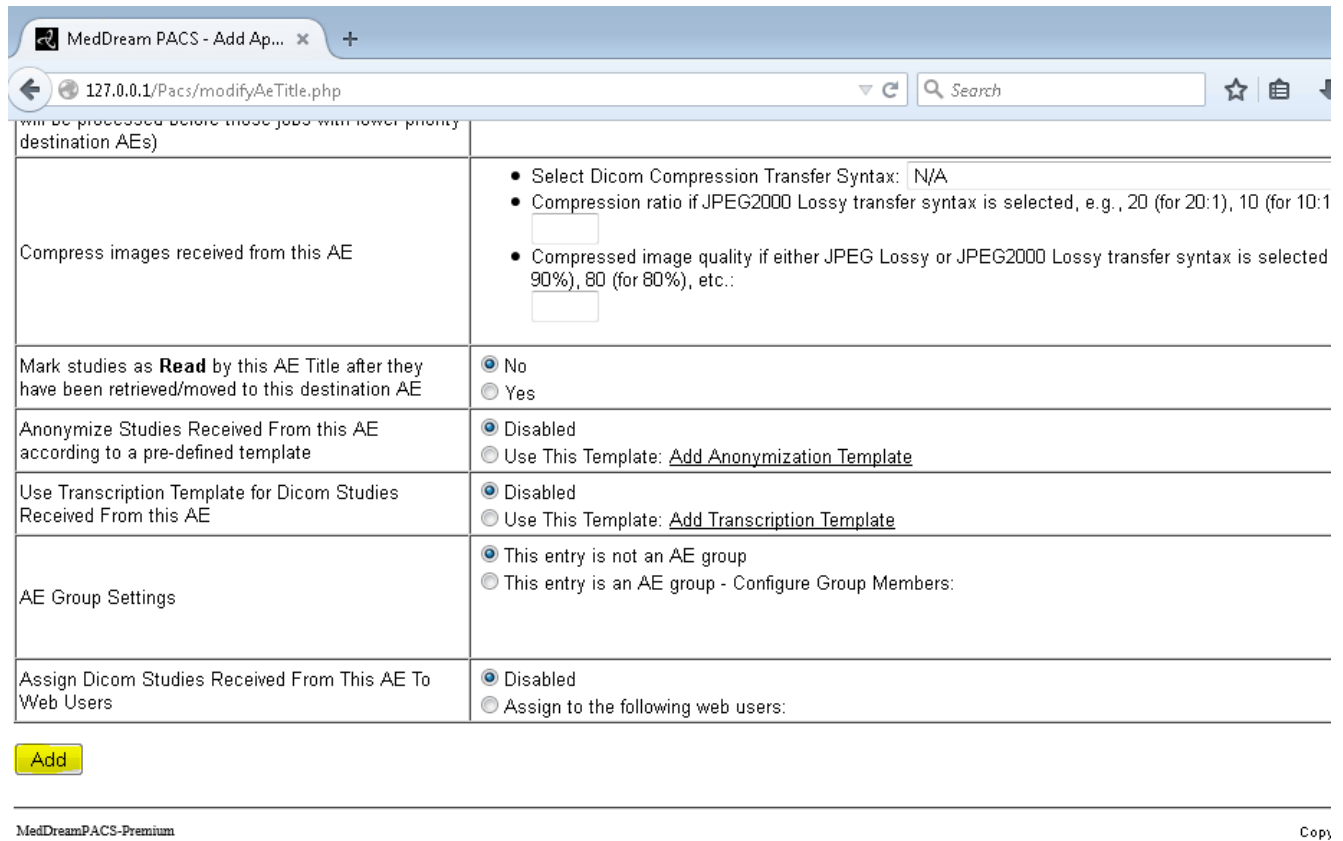


Figure 17. Add device to listening list

5. Now you have your device in the listening list



Figure 18. DICOM devices list

6. Now you need to configure your device to send DICOM files to server

---

|              |           |
|--------------|-----------|
| Title:       | demo      |
| Description: | demo      |
| Host:        | 127.0.0.1 |
| IP:          | 127.0.0.1 |
| Port:        | 104       |

Figure 19. DICOM device configuration local example

For IP address please use your MedDream PACS LAN or external IP

7. If everything configured well than now you can send files to MedDream PACS server directly from your device

## Mysql database administrating with phpMyAdmin

http://127.0.0.1/dbadmin

**Username: root**

**Password: your password**

**Database: PACS**

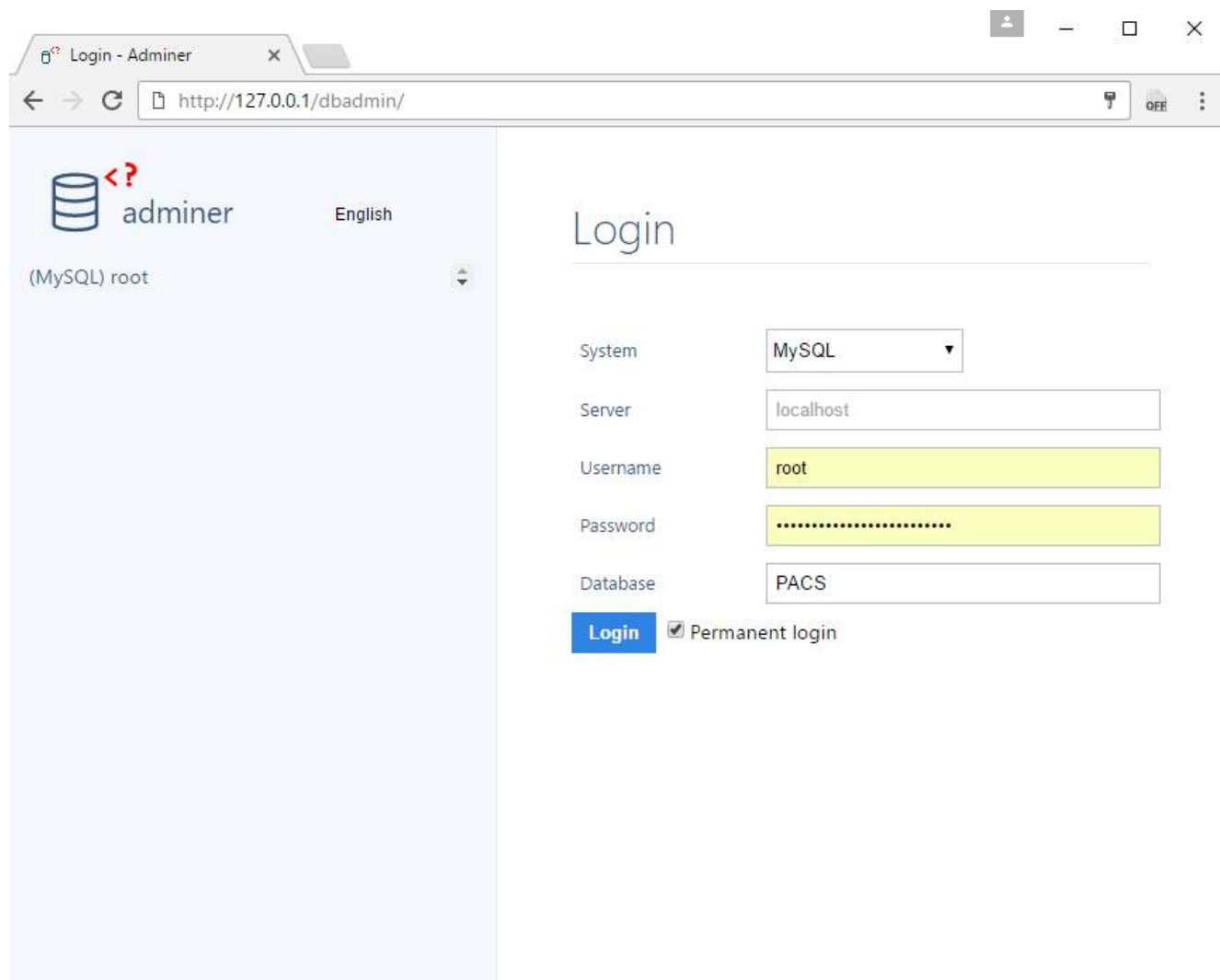


Figure 20. dbadmin connection.

## Uninstall

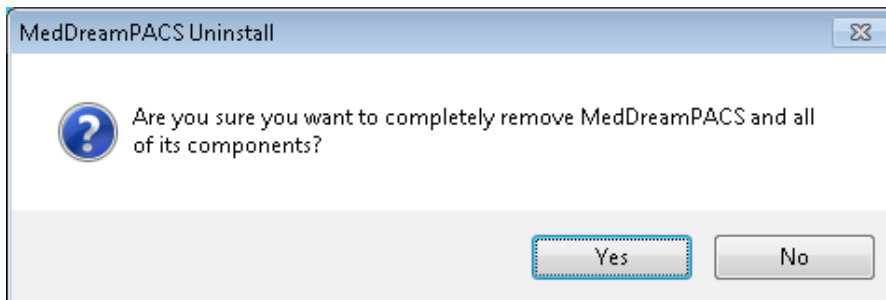


Figure 21. A confirmation window of uninstallation.

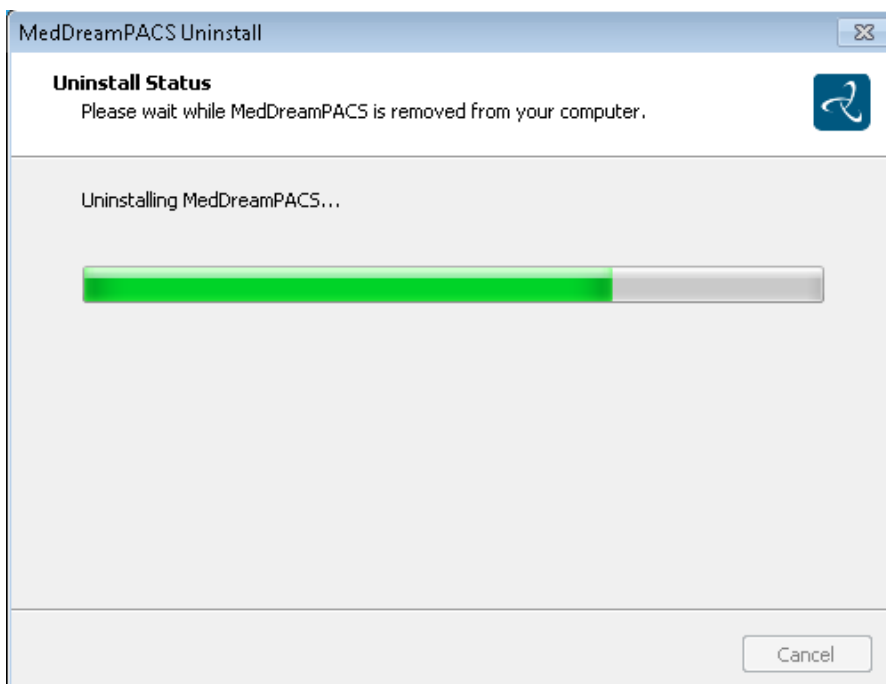


Figure 22. Uninstalling.

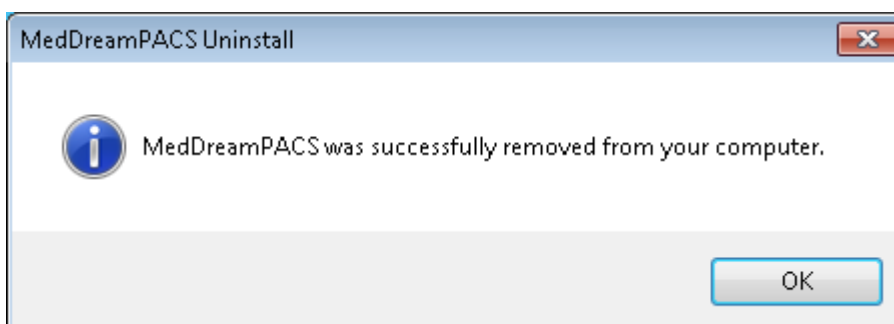


Figure 23. Confirmation that system is uninstalled.

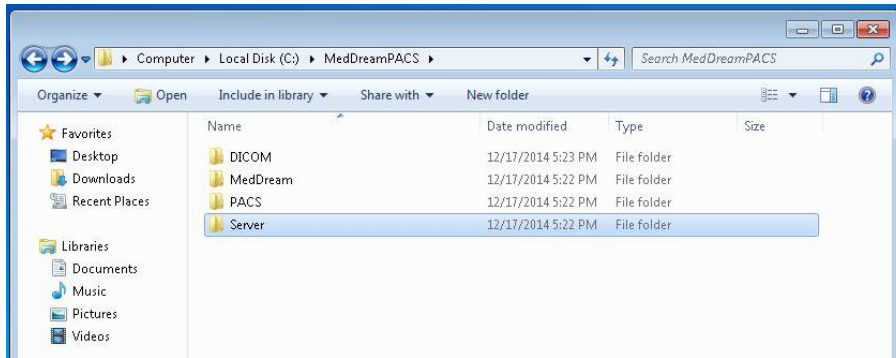


Figure 24. Saved files after uninstallation.

Uninstaller will keep some directories and files what was generated after install (study DICOM files, MedDream license and logs, PACS some logs and Server MySQL database and logs).

---

## Index

|  |    |
|--|----|
| Figure 1. MedDream PACS Premium package information..... | 6  |
| Figure 2. Beginning of installation.....                 | 6  |
| Figure 3. Password information. ....                     | 7  |
| Figure 4. Information before install. ....               | 7  |
| Figure 5. Installation. ....                             | 8  |
| Figure 6. Microsoft Visual C++ 2005 installation.....    | 8  |
| Figure 7. Microsoft Visual C++ 2008 installation.....    | 9  |
| Figure 8. PACS server installation.....                  | 10 |
| Figure 9. Finishing installation. ....                   | 11 |
| Figure 10. Services.....                                 | 12 |
| Figure 11. PACS service .....                            | 13 |
| Figure 12. Processes.....                                | 14 |
| Figure 13. MedDream WEB interface. ....                  | 15 |
| Figure 14. PACS web interface.....                       | 16 |
| Figure 15. DICOM AE administrating.....                  | 17 |
| Figure 16. DICOM device information.....                 | 17 |
| Figure 17. Add device to listening list .....            | 18 |
| Figure 18. DICOM devices list .....                      | 18 |
| Figure 19. DICOM device configuration local example..... | 19 |
| Figure 20. dbadmin connection.....                       | 20 |
| Figure 21. A confirmation window of uninstallation. .... | 21 |
| Figure 22. Uninstalling. ....                            | 21 |
| Figure 23. Confirmation that system is uninstalled. .... | 21 |
| Figure 24. Saved files after uninstallation. ....        | 22 |

---

## Index

### I

Installation ..... 6

### M

MedDream PACS administrating interface ..... 16

MedDream WEB interface ..... 15

Mysql database administrating with phpMyAdmin..... 20

### N

Notes on the user`s manual..... 4

### S

Services and processes ..... 12

Setup MedDream Pacs server to receive DICOM files ..... 17

### U

Uninstall..... 21



---

MedDream PACS Premium is manufactured by Softneta UAB.

**Softneta UAB**  
K. Barsausko str. 59  
LT-51423 Kaunas, Lithuania

