



**MedDream DICOM Viewer**  
**Specific VET Functions**  
**(version 7.1)**

---

© 2019, Softneta UAB, Kaunas

All rights reserved in the event of granting of patents or registration as a utility patent.

All names of companies and products mentioned in this user's manual may be trademarks or registered trademarks. References to products of other manufacturers are for information purposes only. Such references are intended neither as an approval nor a recommendation of these products. Softneta UAB accepts no liability for the performance or use of such products.

Other brand names, software and hardware names used in this user's manual is subject to trademark or patent protection. The quoting of products is for informational purposes only and does not represent a trademark misuse.

This user's manual is protected by copyright. Unless exclusively authorized in writing, dissemination, duplication or other commercial exploitation of this documentation set or communication of its contents or parts of it is not permitted. In case of infringement, the violator may be liable to pay compensation for damages.

Specifications due to technical developments are subject to change. This user's manual is not subject to the revision service. Please contact the manufacturer or authorized dealer to request the latest edition of the manual.

---

# Table of Contents

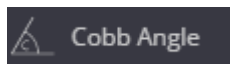
Table of Contents.....	3
Specific VET Functions .....	4
Cobb Angle.....	4
Tibial Plateau Angle.....	4
Norberg Angle .....	5
Verbal Heart Scale .....	7
About window .....	10
MedDream DICOM VIEWER USER MANUAL.....	11

---

## Specific VET Functions

This document describes only MedDream VET DICOM Viewer **specific functions for veterinary: Cobb Angle, TPA, Norberg Angle and VHS**. To read full user manual of MedDream DICOM Viewer, please follow the link: [MEDDREAM DICOM VIEWER USER MANUAL](#).

### Cobb Angle



---

The **Cobb angle** button is used to measure angle between lines.

To measure angle:

- select **Cobb angle** measurement,
- click on image and draw two lines,
- the Cobb angle measure will appear on the screen,
- you can drag lines and line points; by dragging the white dotted line, all lines will move simultaneously.

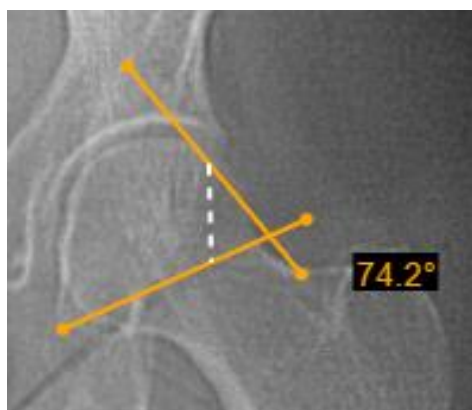


Figure 1. Cobb angle.



---

**NOTE! Cobb Angle, TPA, Norberg Angle and VHS** measuring is intended for veterinary usage. By default settings these tools are not shown in Measure menu for other than VET license types.

### Tibial Plateau Angle



---

The **TPA** button is used to measure angle between the tibial plateau slope line and the line that is perpendicular to tibia axis line.

---

---

To measure angle:

- select **TPA** measurement,
- click on image and draw two lines: first, the tibia axis line (A) and then the tibial plateau slope line (B),
- the system draws the line (dashed line C) perpendicular to the tibia axis line A and displays the angle between the line C and tibial plateau slope line B,
- you can drag the line points or the whole lines simultaneously.



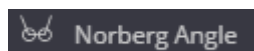
Figure 2. Tibial Plateau Angle (TPA).



---

**NOTE! Cobb Angle, TPA, Norberg Angle, and VHS** measuring is intended for veterinary usage. By default settings these tools are not shown in Measure menu for other than VET license types.

## Norberg Angle



---

The **Norberg Angle** button is used to evaluate canine hips.

To measure the angle:

- Zoom in the selected image and select **Norberg Angle** measurement,
- Click the left mouse button over the selected image point to place the first circle of the Norberg angle,
- Move mouse cursor on the circle center point and drag to change position as you need:

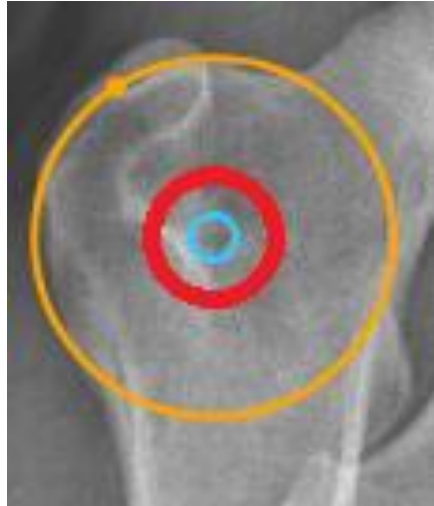


Figure 3. Center of the circle.

- Repeat the same process with the other circle,
- Once done with both circles, Norberg angle measurement will appear:

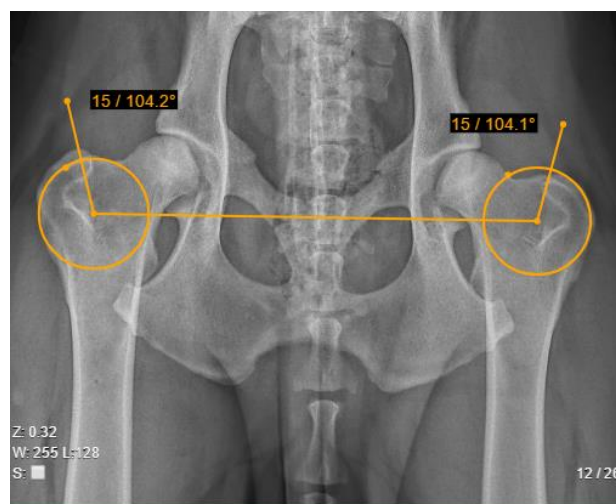


Figure 4. Norberg angle measurement.

- In order to adjust the circle size, move the mouse cursor to the dot on the circle and drag it:



Figure 5. The outer part of the circle.

- To adjust the angles, move mouse cursor to the end of line (over the dot) and drag it,
- The angles will be calculated:

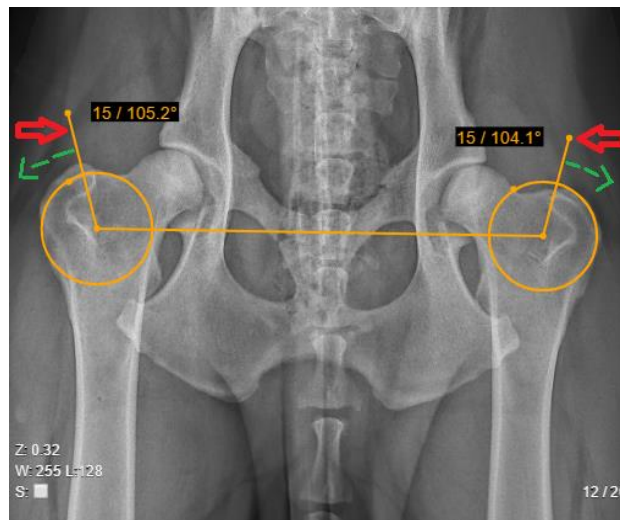


Figure 6. Demonstration of the Norberg Angle measurement.



Figure 7. Norberg Angle.



---

**NOTE! Cobb Angle, TPA, Norberg Angle, and VHS** measuring is intended for veterinary usage. By default settings these tools are not shown in Measure menu for other than VET license types.

## Verbal Heart Scale



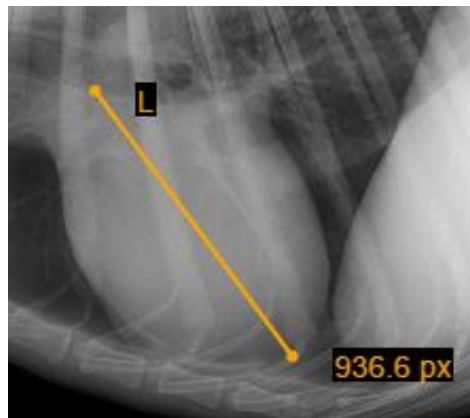
---

The **VHS** (Vertebral Heart Scale) button is used to measure heart size and provide an accurate assessment of true cardiac enlargement.

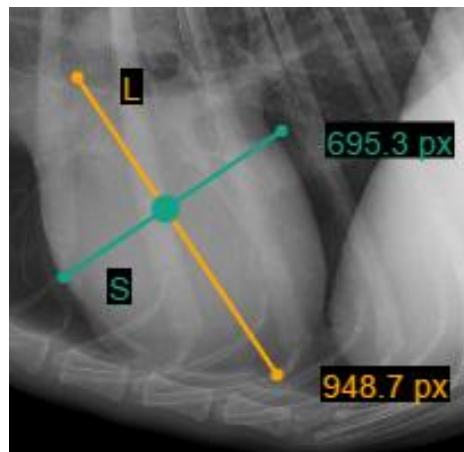
To perform a VHS:

- select **VHS** measurement,

- 
- place the mouse cursor and click the left mouse button on the point from which you want to start measuring Long Axis Point (L),
  - move the cursor to the second point along the area and click the left mouse button again,
  - the Long Axis Point Line will appear,
  - place the mouse cursor and click the left mouse button on the point from which you want to start measuring Short Axis Point (S),
  - move the cursor to the second point across the area and click the left mouse button again,
  - Short Axis Point Line will appear,



*Figure 8. Long axis points.*



*Figure 9. Short Axis points.*

- In order to define SL point, place your mouse cursor and click the left mouse button on the point from which you want to measure S and L lines,
- S and L lines will appear:



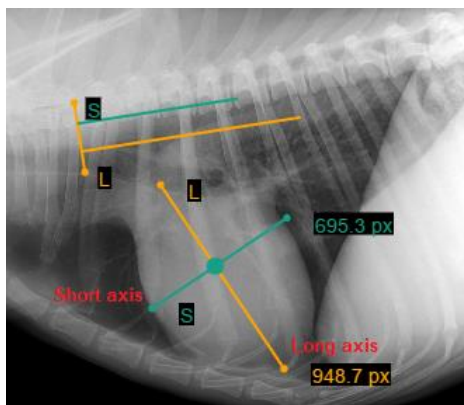


Figure 10. Demonstration of VHS measurement.



**NOTE!** You can rotate lines by dragging the ends of the line (dots) according to your needs. Click the left mouse button on the yellow dot (highlighted in red) and drag the line into a position where you want it to be. Middle vertical line (S and L line intersection point) allows to move S and L lines at the same time:

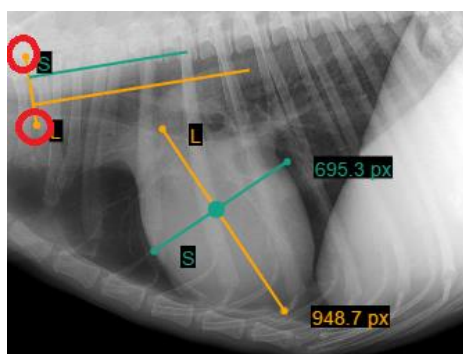


Figure 11. Rotation demonstration.



**NOTE!** Cobb Angle, TPA, Norberg Angle, and VHS measuring is intended for veterinary usage. By default settings these tools are not shown in Measure menu for other than VET license types.

---

## About window

**About** information window will display with the following information.

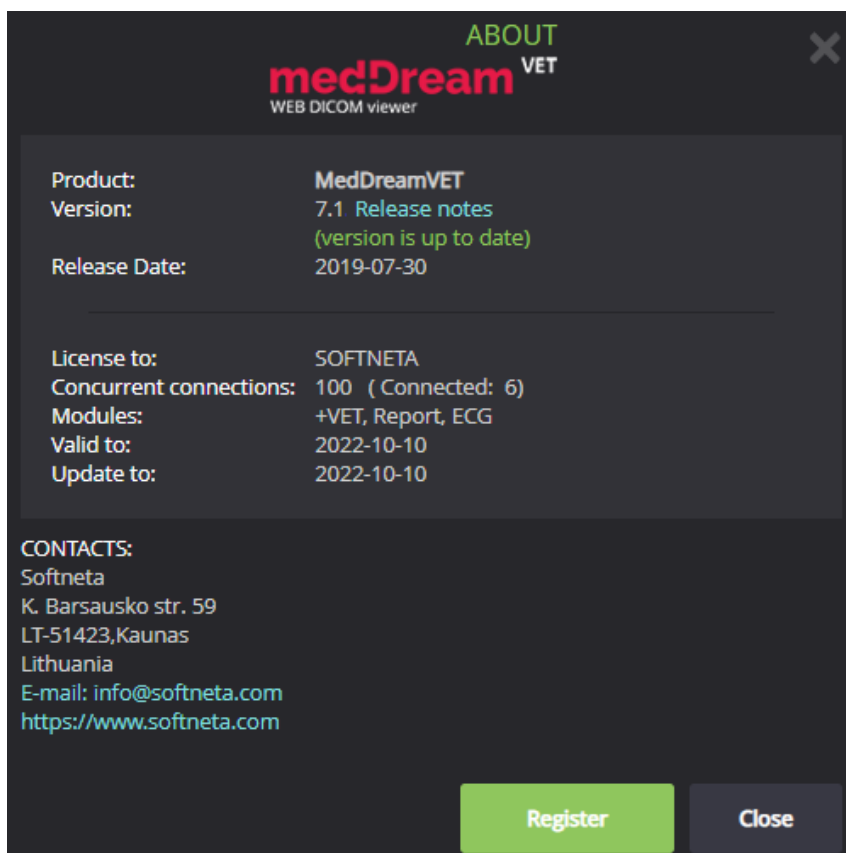


Figure 12. Information window.

Information window will display:

1. Full product name;
2. Version;
3. Release date;
4. License to;
5. Concurrent connections;
6. Modules;
7. Valid to;
8. Update to – date till the technical support and updates are provided;
9. Contacts – Softneta, UAB contacts.

To close the window, click on **Close** or **X** buttons.

---

# MedDream DICOM VIEWER USER MANUAL

**Please NOTE:**

This document describes only MedDream VET DICOM Viewer **specific functions for veterinary: Cobb Angle, TPA, Norberg Angle and VHS.**

Full description of MedDream DICOM Viewer features, measurements and all other details can be reached by this link: [MEDDREAM DICOM VIEWER USER MANUAL](#).